

ROYPOW TECHNOLOGY CO., LTD. has a policy of improving products continuously. All the information in this catalogue is provided for reference only. We reserve the right to make revisions as well as product alterations and improvements at any time without prior notice. Trademarks are the property of ROYPOW TECHNOLOGY CO., LTD. or their respective owners. Technical data and illustrations are not binding. We assume no liability for misprints.

Version: November 06, 2024, Off-Grid Energy Storage System



ROYPOW Technology Co., Ltd.

Tel: +86 (0)752-327 9099

Email: sales@roypow.com
service@roypow.com
marketing@roypow.com

Web: www.roypow.com

Add: ROYPOW Industrial Park, No.16, Dongsheng South Road,
Chenjiang Street, Zhongkai High-Tech District, Huizhou City,
Guangdong Province, China

ROYPOW (USA) Technology Co., Ltd.

Tel: +1 512 688 5555 (Texas Office)

Email: sales@roypowusa.com

Service Support: +1 626 269 0547

Email: service@roypowusa.com

Web: www.roypow.com

Head Office: 5901 Triumph St, Commerce, CA 90040, USA

Texas Office: 2350 Campbell Creek Blvd #100 Richardson, TX 75082, USA

Florida Office: 277 Douglas Avenue, Unit 1004, Altamonte Springs, FL 32714, USA

Indiana Office: 5545 W Raymond St, Ste H Indianapolis, IN 46241, USA

Georgia Office: 1150 Cobb International PI NW Ste E, Kennesaw, GA 30152, USA

ROYPOW Technology UK Limited

Tel: +44 (0) 7918 955 940

Email: sales.uk@roypow.com

Add: Regus Green Park, 200 Brook Dr, Reading RG2 6UB, UK

ROYPOW Battery Technology (Pty) Ltd

Email: sales.za@roypow.com

Tel: +27 71 434 3769

Add: 53 Lake Rd, Longmeadow Business Estate, Edenvale, 1609, South Africa

ROYPOW (Europe) Technology B.V.

Email: sales.eu@roypow.com

Tel: +31 702 001 114

Web: www.roypoweurope.com

Add: Seattleweg 1, 3195 ND, Pernis, The Netherlands

ROYPOW Australia Technology Pty Ltd

Email: sales@roypowtech.com.au

Tel: +61 29185 0814

Web: www.roypowtech.com.au

Add: Suite 803a, 18 Orion Road, Lane Cove, NSW, 2066, Australia

ROYPOW Technology GmbH

Tel: +49 (0) 176 2358 8956

Email: sales.de@roypow.com

Web: www.roypow.gmbh

Add: Rosa-Parks-Straße 4, 64295 Darmstadt, Germany

ROYPOW株式会社

Tel: +81 090 7092 6969

Email: info@roypow.co.jp

Web: www.roypow.co.jp

Add: 〒271-0094 千葉県松戸市上矢切299- 7

ROYPOW Technology Co., Ltd (Korea)

Tel: 1555-2016

Email: sales.kr@roypow.com

Add: 2405, GIDC Gwangmyeong station A Dong, 43 Iljik-ro,
Gwangmyeong-si, Gyeonggi-do, Korea



US-standard

Off-Grid Energy Storage System

Experience the Freedom of
Energy Independence



✉ sales@roypow.com
🌐 www.roypow.com



ROYPOW

For One-stop New Energy Solutions

- R&D, manufacturing and sales of motive power systems and energy storage systems as one-stop solutions
- Fully automatic production lines, a full range of test equipment and an advanced MES
- Covering Low-Speed Vehicles' Batteries, Industrial Batteries, as well as Residential ESS, Commercial & Industrial ESS, and Mobile ESS
- Self-development of power electronics technologies, including PCS, BMS, and EMS



750+ Employees

190+ R&D People

1,130,211 sq.ft Headquarters Floor Area

26,909.77 sq.ft Testing Center

202 Patents

Quality Control Certificates:

- ✓ Environmental Management System: ISO 14001:2015
- ✓ Occupational Health and Safety Management System: ISO 45001:2018
- ✓ Quality Management System: ISO 9001:2015, IATF16949:2016
- ✓ Information Security Management System: ISO/IEC 27001:2022
- ✓ Social Accountability Management System: SA8000:2014
- ✓ Hazardous Substance Process Management: IECQ QC 080000

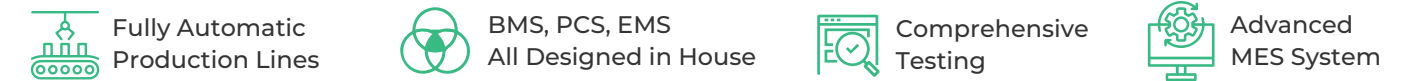


Product Certifications:

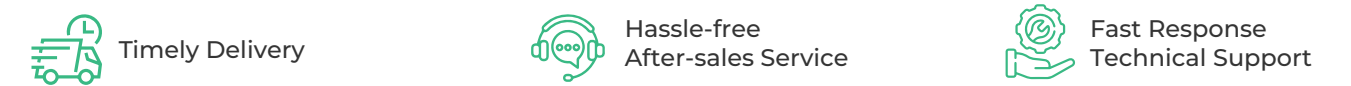
UL 1973, UL 9540A, UL 9540, UL 2580, UL 2271, UL 1741			FCC, IEC/EN 61000-6, BS EN IEC 61000-6
IEEE 1547			IEC 60730, ISO 13849-1
IEC 62619			UN 38.3
EN 62477, EN 62040, (EU) 2023/1542, EN 62109-1, EN 62109-2			RoHS Directive 2011/65/EU & (EU) 2015/863

R&D and Manufacturing Highlights

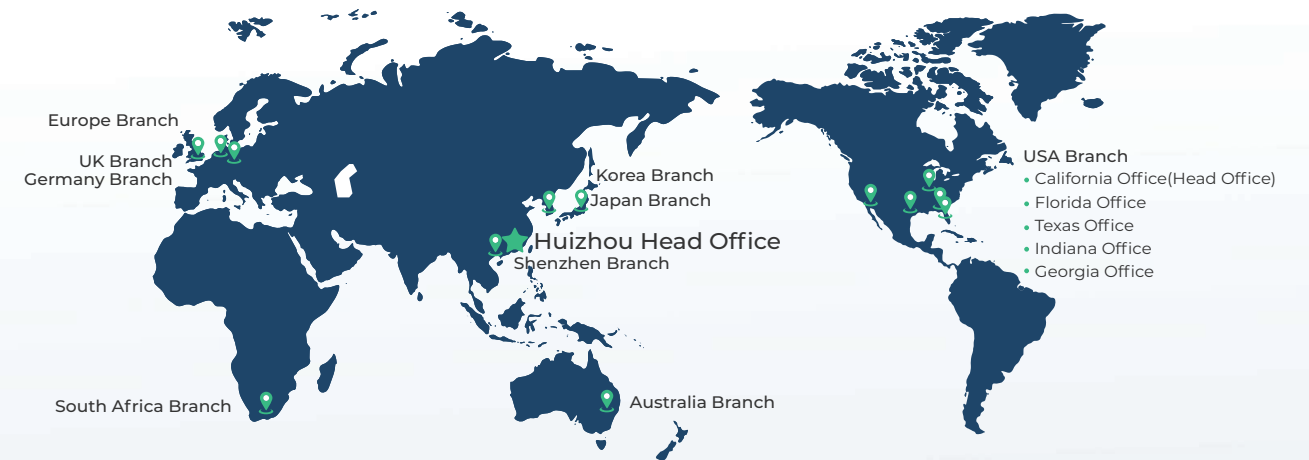
As a result of these investments, ROYPOW is capable of “end-to-end” integrated delivery, making our products out-perform the industry norms.



Global Sales and Service Network



ROYPOW has comprehensively expanded its overseas market layout to ensure the localization of R&D, manufacturing, marketing and service, becoming one of your most reliable and valuable partners.



Upgrading to New Technology, with Our Turnkey Solutions.

With years of dedication to new energy solutions, we are proud to offer customers professional solutions for:

- Low-speed Vehicle Batteries
- Battery Systems for Off-highway Applications
- Residential Energy Storage Systems
- Mobile Energy Storage Systems
- Industrial Batteries
- Battery Systems for Emerging Applications
- Commercial & Industrial Energy Storage Systems
- Chargers



Versatile Off-Grid System

Ideal for powering homes, remote cabins, rural areas as well as the regions where the grid access is limited, unavailable, or unreliable. Go off the grid with peace of mind.





Off-Grid Residential Energy Storage System

Integrating a high-capacity battery pack with a performance inverter, the ROYPOW Off-Grid Residential Energy Storage System offers a reliable and efficient solution for homes seeking energy resilience.

It ensures a continuous power supply from renewable sources, even during grid outages, empowering users with stable energy and peace of mind.

*Empowering Your Home
with Sustainable Energy Solutions*

ROYPOW System Includes:



LiFePO₄ Batteries

ROYPOW LiFePO₄ battery pack is a safe and efficient solution for storing excess solar energy, reducing costs, increasing energy independence, and providing backup power for your home.

Up to **16**
units in parallel

Capacity range:
5.1 ~ 81.6 kWh

>6,000
times of cycle life

IP65
ingress rating

Built-in hot aerosol
fire extinguishing
system



5kW / 6.5kW / 10kW Solar Inverter

ROYPOW solar inverter offers a dependable solution for converting solar energy into usable power, optimizing energy consumption, and enhancing system performance, while ensuring smooth operation for your home.

99.9% max.
MPPT tracking efficiency

Up to **6** unit
in parallel

Three phase
available parallel connection

Generator
input

Solar part

Inverter

R5000S-UP-120V
R6500S-US
R10000S-US

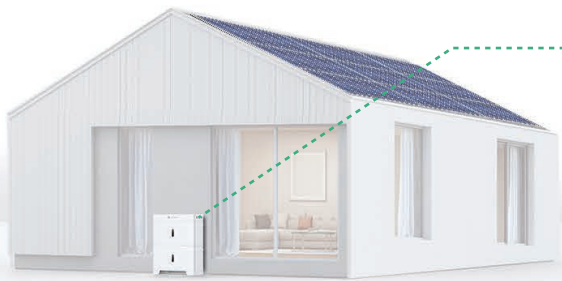


solar panel

405W solar panel
550W solar panel
605W solar panel
660W solar panel

Inverter Model	R5000S-UP-120V	R6500S-US	R10000S-US
Max.PV Power	5.5 kW	11 kW	11 kW
MPPT Voltage Range	120~450 V	150 ~450 V	125 ~425 V
Max. Input Current per MPPT	22 A	18 A / 18 A	22 A / 22 A
Number of MPPT	1	2	2
405W Solar Panel	14 pcs (7 s 2 p)	28 pcs (7 s 4 p)	28 pcs (7 s 4 p)
550W Solar Panel	10 pcs (5 s 2 p)	20 pcs (5 s4 p)	20 pcs (5 s 4 p)
605W Solar Panel	8 pcs (8 s 1 p)	16 pcs (8 s2 p)	16 pcs (8 s 2 p)
660W Solar Panel	8 pcs (8 s 1 p)	16 pcs (8 s2 p)	16 pcs (8 s 2 p)

Battery part



Battery

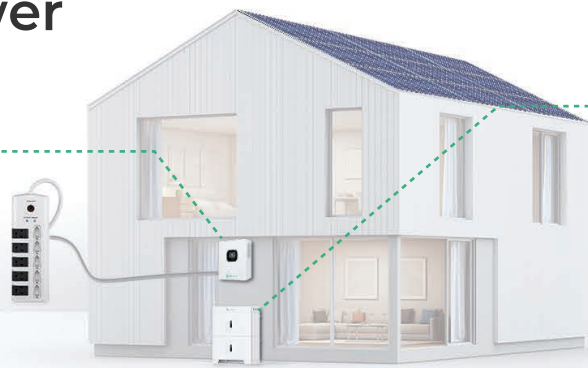
2*RBmax5.1L2
3*RBmax5.1L2
4*RBmax5.1L2

Battery Model	2*RBmax5.1L2	3*RBmax5.1L2	4*RBmax5.1L2
Nominal Energy	10.24 kWh	15.36 kWh	20.48 kWh
Usable Energy	9.58 kWh	14.37 kWh	19.16 kWh
Operating Voltage	44.8 ~ 56.8 V		
Max. Discharge Current	200 A		
Min. Continuous DC Discharge Power	8.9 kW	8.9 kW	8.9 kW

Backup power

Inverter

R5000S-UP-120V
R6500S-US
R10000S-US

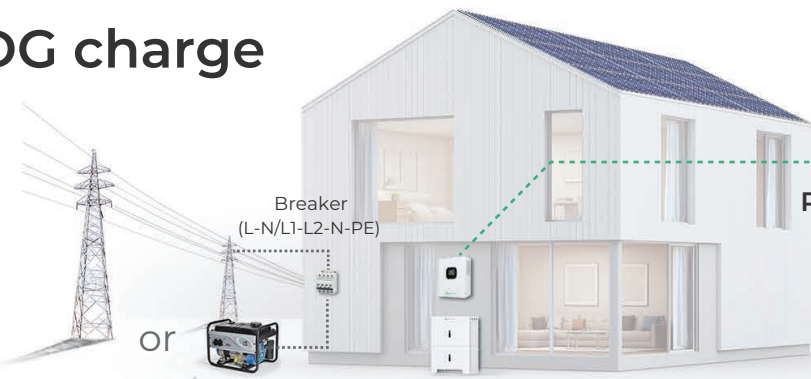


Battery

2*RBmax5.1L2
3*RBmax5.1L2
4*RBmax5.1L2

Inverter Model	R5000S-UP-120V	R6500S-US	R10000S-US
Rated Power	5 kW	6.5 kW	10 kW
Overload	105%<Load≤115%@10 min. 115%<Load≤125%@ 1 min		
Rated Voltage	120 V (L-N)	120 V (L-N) / 240 V, (L1 / L2 / N)	120 V (L-N) / 240 V, (L1 / L2 / N)
Frequency	60 Hz		
Output Current	41.7 A	27 A	41.7 A
Battery Model	2*RBmax5.1L2	3*RBmax5.1L2	4*RBmax5.1L2
Usable Energy	9.58 kWh	14.37 kWh	19.16 kWh
To Load	<5 kW	<6.5 kW	<10 kW/8.9 kW




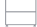




Mains/DG charge



Inverter

R5000S-UP-120V
R6500S-US
R10000S-US

Inverter Model	R5000S-UP-120V	R6500S-US	R10000S-US
Max. Mains/Generator Charging Current	40 A	80 A	120 A
Battery Charging Voltage	48 V	48 V	40-58 V
Mains/Generator Input Voltage Range	90-140 V	65-140 V	90-140 V
Frequency	60 Hz	60 Hz	60 Hz
Only Mains/DG Charge Power	1.9 kW	3.84 kW	5.76 kW
2*RBmax5.1L2 Charging Time	<5 hrs	<2.5 hrs	<2 hrs
3*RBmax5.1L2 Charging Time	<7.5 hrs	<4 hrs	<3 hrs
4*RBmax5.1L2 Charging Tlme	<10 hrs	<5.5 hrs	<3.5 hrs

Model	1*RBmax5.1L	2*RBmax5.1L2	3*RBmax5.1L2	4*RBmax5.1L2	5*RBmax5.1L2	6*RBmax5.1L2	7*RBmax5.1L2	8*RBmax5.1L2
								
Nominal Energy (kWh)	5.12	10.24	15.36	20.48	25.6	30.72	35.84	40.96
Usable Energy (kWh)	4.79	9.58	14.37	19.16	23.95	28.74	33.53	38.32
Scalability (kWh)	Max. 16 in parallel, Max. 81kWh							
Nominal Charge/Discharge Current (A)	50 / 50	100 / 100	150 / 150	200 / 200	250 / 250	300 / 300	350 / 350	400 / 400
Max. Charge/Discharge Current(A)	100 / 100	100 / 200	150 / 300	200 / 400	250 / 400	300 / 400	350 / 400	400 / 400
Cell type	Lithium iron phosphate (LFP)							
Operating voltage range (V)	44.8 ~ 56.8							
Nominal voltage (V)	51.2							

Model	R6500S-US	R10000S-US
PV Input		
Max. PV Input Power	10000 W	11000 W
Max. DC Voltage	550 V	500 V
MPPT Voltage Range	150 V - 450 V	125 V - 425 V
Max. Input Current	18 A / 18 A	22 A / 22 A
Number of MPPT	2	2
Battery Input		
Battery Type	Lead-acid / LFP	Lead-acid / LFP
Rated Voltage	48 V	48 V
Voltage Range	40 V - 60 V	40 V - 60 V
Max. MPPT Charging Current	140 A	200 A
Max. Mains/GeneratorCharging Current	80 A	120 A
Max. Hybrid Charging Current	140 A	200 A
AC Input		
Input Voltage Range	65~140 VA	90-140 VA
Frequency Range	50 Hz / 60 Hz	50 Hz / 60 Hz
Bypass Overload Current	40 A	63 A
AC Output		
Rated Output Power	6500 W	10000 W
Max. Peak Power	13000 W	20000 W
Rated Output Voltage	120/240Vac （Split Phase/Single Phase）	
Load Capacity of Motors	4HP	6HP
Rated AC Frequency	50 Hz / 60 Hz	50 Hz / 60 Hz
Waveform	Pure Sine Wave	Pure Sine Wave
Switch Time	10 ms	10 ms
Efficiency		
MPPT Tracking Efficiency	99.90%	99.9%
Max. Efficiency (Battery)	93%	92%

General Specifications		
Dimension (L x W x H)	584.6 x 410 x 133 mm (23.0 x 16.14 x 5.24 inch)	620 x 445 x 130 mm (24.41 x 17.52x 5.12 inch)
Weight	18.9 kg (41.66 lbs.)	27 kg (59.52 lbs.)
Installation	Wall-Mounted	
Environmental Temperature Range	-10~55°C, >45°C derated (14~131°F, >113°F derated)	
Max. Altitude	>2,000m / > 6,561.68 ft Derating	
Ingress Rating	IP20	
Cooling Mode	Fan	
Noise	< 60dB	
Display Type	LCD Display	
Communication	Wi-Fi / RS485/CAN	
Certification	UL1741, FCC 15 Class B	

Model	1*RBmax5.1L	2*RBmax5.1L2	3*RBmax5.1L2	4*RBmax5.1L2	5*RBmax5.1L2	6*RBmax5.1L2	7*RBmax5.1L2	8*RBmax5.1L2
Weight (Kg / lbs.)	48.5 Kg 106.9 lbs.	94.3 Kg 207.89 lbs.	140 Kg 308.64 lbs.	185.7 Kg 409.39 lbs.	234.3 Kg 516.54 lbs.	280 Kg 617.29 lbs.	325.7 Kg 718.04 lbs.	371.4 Kg 818.79 lbs.
Dimensions (W × D × H mm / inch)	650x240x460 mm 25.6 x 9.5 x 18.1 inch	650x240x790 mm 25.6x9.4x31.1 inch	650x240x1120 mm 25.6x9.4x44.1 inch	650x240x1450 mm 25.6x9.4x57.1 inch	650x240x790 + 650x240x1120 mm 25.6x9.4x31.1 inch+ 25.6x9.4x44.1 inch	650x240x1120 + 650x240x1120 mm 25.6x9.4x44.1 inch+ 25.6x9.4x44.1 inch	650x240x1120 + 650x240x1450 mm 25.6x9.4x44.1 inch+ 25.6x9.4x57.1 inch	650x240x1450 + 650x240x1450 mm 25.6x9.4x57.1 inch+ 25.6x9.4x57.1 inch
Operating temperature (°F/°C) ^{III}	Charge: 32 ~ 131°F (0 ~ 55°C), Discharge: 4 ~ 131°F (-20 ~ 55°C)							
Storage temperature (°F/°C)	≤1 month: -4 ~ 113°F (-20 ~ 45°C), >1 month: 32 ~ 95°F (0 ~ 35°C)							
Installation location	Indoor/Outdoor, Floor standing or Wall mounted							
Communication	CAN, RS485							
Relative humidity	0 ~ 95%							
Max. altitude (m / ft.)	4000 m / 13,123 ft (>2,000 m / > 6,561.68 ft derating)							
Ingress rating	IP 65							
Certification	IEC 62619, UL 1973, EN 61000-6-1, EN 61000-6-3, FCC Part 15, UN38.3							

Model	R5000S-UP-120V
PV Input	
Max. PV Input Power	5500 W
Max. DC Voltage	500 V
MPPT Voltage Range	120 V-450 V
Max. Input Current	22 A
Number of MPPT	1
Battery Input	
Battery Type	Lead-acid / LFP
Rated Voltage	48 V
Voltage Range	40V-60 V
Max. MPPT Charging Current	100 A
Max. Mains/GeneratorCharging Current	40 A
Max. Hybrid Charging Current	100 A
AC Input	
Input Voltage Range	90~140 VA
Frequency Range	50 Hz / 60 Hz
Bypass Overload Current	63 A
AC Output	
Rated Output Power	5000 W
Max. Peak Power	10000
Rated Output Voltage	120 Vac （ L/N/PE Single Phase）
Load Capacity of Motors	4HP
Rated AC Frequency	50 Hz / 60 Hz
Waveform	Pure Sine Wave
Switch Time	10 ms
Efficiency	
MPPT Tracking Efficiency	99.90%
Max. Efficiency (Battery)	92%

General Specifications	
Dimension (L x W x H)	446.9 x 350 x 133 mm (17.59 x 13.78 x 5.24 inch)
Weight	14 kg (30.86 lbs.)
Installation	Wall-Mounted
Environmental Temperature Range	-10~55°C,>45°C Derated (14~131°F, >113°F Derated)
Max. Altitude	>2,000m / > 6,561.68 ft Derating
Ingress Rating	IP20
Cooling Mode	Forced Air Cooling with Adjustable Air Speed
Noise	< 60dB
Display Type	LCD Display
Communication	Wi-Fi / RS485
Certification	UL1741, FCC 15 Class B

Note: All data are based on ROYPOW standard test procedures. Actual performance may vary according to local conditions



*Reliable Energy
for the Perfect Getaway*



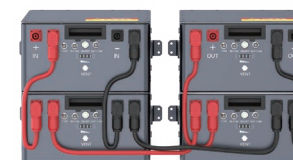
Off-Grid Vehicle-Mounted Energy Storage System

For vehicles parked in unconventional locations without convenient access to the mains grid, a reliable off-the-grid power system is essential.

ROYPOW's vehicle-mounted system, featuring high-capacity batteries with fast charging, an efficient inverter, and an intelligent energy monitoring and management system, is the ideal, cost-effective solution.

It meets basic power needs for lighting, refrigeration, and other electric appliances and reduces generator usage, enabling off-grid living with modern conveniences while reducing carbon footprint.

ROYPOW System Includes:



LiFePO₄ Batteries

ROYPOW LiFePO₄ battery pack provides a robust and reliable power source for the off-grid system to run appliances on the vehicle without running the generator.

Up to **8** units
in parallel

Capacity range:
5.1 ~ 40.8 kWh

>6,000
times of cycle life

Automotive-grade,
vibration-resistant cells

Built-in hot aerosol
fire extinguishing
system

IP65
ingress rating



Solar Inverter

Whether camping or traveling, ROYPOW solar inverters are a valuable addition to any RV setup, providing an efficient solution for a reliable power supply for all your devices and appliances to enhance your adventures.

6.5 kW / 10 kW
optional

99.9% max.
MPPT tracking efficiency

Up to **6**
in parallel

Three phase available
via parallel connection

Generator
input



Energy Management System (EMS)

It collects, manages and coordinates equipment in the region, ensuring the safe, stable, and efficient operation of the system.

Energy allocation management

Connection via **Wi-Fi hotspot**

Remote control

IP65 ingress rating

Park Models

Empower park models with sustainable, uninterrupted power, enhancing convenience and reducing reliance on grid power.



Trailers

Enjoy the reliable power that supports your new adventures and hit the road with peace of mind.



LiFePO₄ Battery



Module	XBmax 5.1L
Normal Voltage	51.2V
Normal Capacity	100Ah
Voltage Range	40-58.4V
Max Continuous Charge Current	50A
Peak Discharge Current	100A
Cycle Life	> 6,000
Ingress Protection	IP65
Cooling mode	Natural convection
Dimension	20.15 x 14.88 x 8.26 inch
Weight	99.2 lbs
Warranty	5 Years

Solar Charger Inverter



Module	R6500S-US
AC Output Power	6,500W
Max. Peak Power	13,000W
AC Output Voltage	120/240Vac, 50 Hz / 60 Hz
AC Input Voltage	65-140 VA
Ingress Protection	IP20
Support	Diesel Generator
Battery Rated Input	48V
Max. AC/Generator Charging Current	80 A
Dimension	23.0 x 16.14 x 5.24 inch
Weight	1.66 lbs
Warranty	2 Years

Solar Charger Inverter



Module	R10000S-US
AC Output Power	10,000W
Max. Peak Power	20,000W
AC Output Voltage	120/240Vac, 50 Hz / 60 Hz
AC Input Voltage	65-140 VA
Ingress Protection	IP20
Support	Diesel Generator
Battery Rated Input	48V
Max. AC/Generator Charging Current	120A
Dimension	24.41 x 17.52x 5.12 inch
Weight	59.52 lbs
Warranty	2 Years

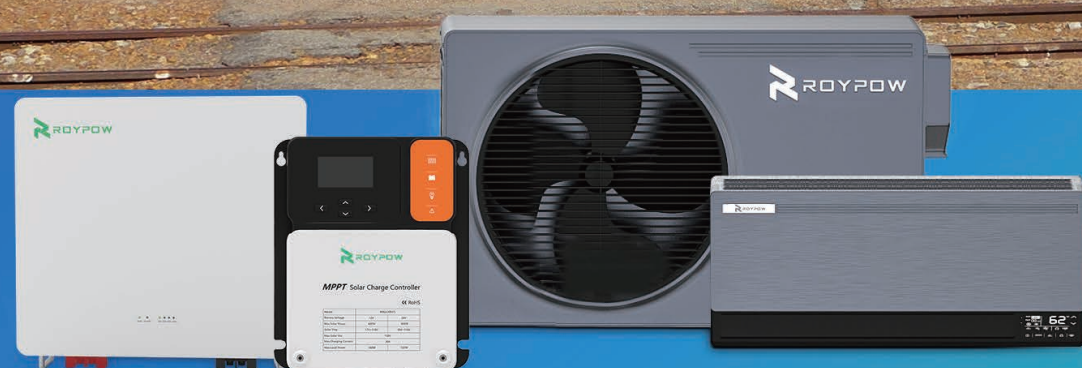
Energy Management System(EMS)



Display Size	XTouch7
Features	7 inch
Ingress Protection	Energy allocation management, Wi-Fi hotspot, Remote control
Dimension	IP65
Weight	7.16 x 6.61 x 1.42 inch
Warranty	2.2 lbs
	2 Years



*Sustainable, Efficient,
and Reliable Power*



Off-Grid Solar Air Conditioner System

For areas where grid power sources are unstable or unavailable but require a reliable power source for their cooling needs, the ROYPOW Off-Grid Solar Air Conditioner System is the way to go.

It features a high-performance DC inverter air conditioner paired with an efficient MPPT and reliable battery energy storage, ensuring optimal cooling and comfort.

ROYPOW System Includes:



DC48V Inverter Air Conditioner

Deliver efficient cooling and operate quietly, creating a comfortable environment with long-lasting performance.

14 hours+ of runtime

12,000 BTU/h cooling capacity

As low as 35dB noise

>15 EER high efficiency



MPPT Solar Charge Controller

Efficiently optimize energy capture from solar panels and ensure maximum power transfer to the batteries, while providing comprehensive charging and discharging protection.

Up to 99% MPPT efficiency

Support solar panel 2 in series / more in parallel



LiFePO₄ Batteries

Designed for efficiency, reliability, and safety, the batteries ensure an uninterrupted power supply to run the air conditioner throughout the night.

Up to 16 units in parallel

Capacity range: 5.1kWh ~ 81.6kWh

>6,000 times of cycle life

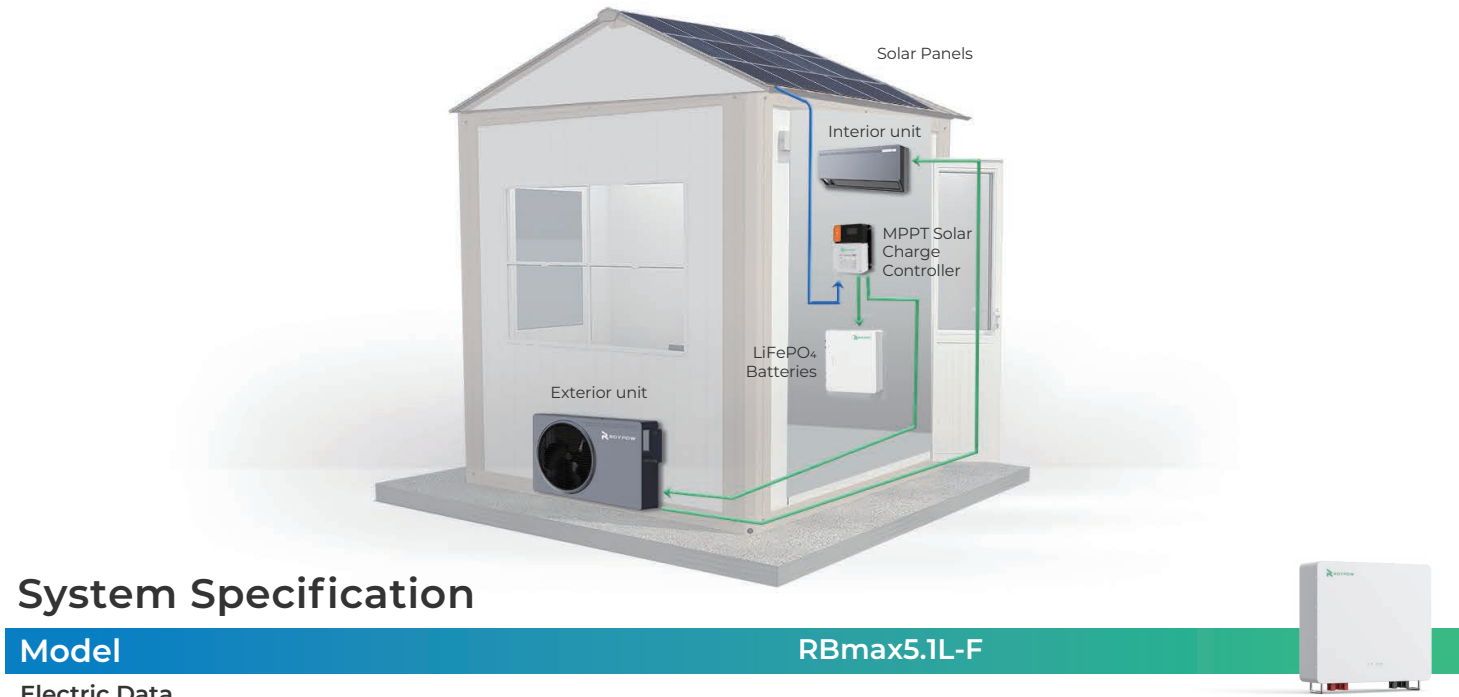
10 years of warranty



Recommended Solar Panels

3PCS of 480W solar panels


Total 1500W solar panel power



System Specification

Model

RBmax5.1L-F



Electric Data

Nominal Energy (kWh)	5.12
Usable Energy (kWh)	4.79
Cell Type	LFP (LiFePO ₄)
Nominal Voltage (V)	51.2
Operating Voltage Range (V)	44.8 ~ 56.8
Max. Continuous Charge Current (A)	100
Max. Continuous Discharge Current (A)	100

General Data

Weight (Kg / lbs.)	48 Kg / 105.8 lbs.
Dimensions (W × D × H) (mm / inch)	500 x 167 x 490 mm / 19.69 x 6.57 x 19.29 inch
Operating Temperature (°C)	0 ~ 55°C (32 ~ 131°F) (Charge), -20 ~ 55°C (4 ~ 131°F) (Discharge)
Storage Temperature (°C)Delivery SOC State (20~40%)	>1 Month: 0 ~ 35°C (32 ~ 95°F); ≤1 Month: -20 ~ 45°C (-4 ~ 113°F)
Relative Humidity	≤ 95%
Max. Altitude (m)	4000 m / 13,123 ft (>2,000 m / >6,561.68 ft derating)
Protection Degree	IP 20
Installation Location	Ground-Mounted; Wall-Mounted
Communication	CAN, RS485

Certification

EMC	CE	Transportation	UN38.3
-----	----	----------------	--------

Warranty

Warranty (Years)	10 Years
------------------	----------

Model	1*RBmax5.1L-F/FA	2*RBmax5.1L-F/FA	3*RBmax5.1L-F/FA	4*RBmax5.1L-F/FA	5*RBmax5.1L-F/FA	6*RBmax5.1L-F/FA	7*RBmax5.1L-F/FA	8*RBmax5.1L-F/FA
Nominal Energy (kWh)	5.12	10.24	15.36	20.48	25.6	30.72	35.84	40.96
Usable Energy (kWh)	4.79	9.58	14.37	19.16	23.95	28.74	33.53	38.32
Scalability (kWh)	Max. 16 in parallel, Max. 81kWh							
Nominal Voltage (V)	51.2							
Operating Voltage Range (V)	44.8-56.8							
Nominal Charge/Discharge Current (A)	50 / 50	100 / 100	150 / 150	200 / 200	250 / 250	300 / 300	350 / 350	400 / 400
Max. Charge/Discharge Current(A)	100 / 100	100 / 200	150 / 300	200 / 400	250 / 400	300 / 400	350 / 400	400 / 400

Model	XKF-12-FTT
Rated input voltage	DC 48 V
Inverter / Non-inverter	Inverter
Mode	Cooling / Heating
Refrigerating capacity	5,000 ~ 12,000 BTU / h (1,500 ~ 3,500 W)
Refrigerating power	300 ~ 830 W
Rated cooling capacity	12,000 BTU / h (3,520 W)
Rated cooling power	750 W
Energy efficiency ratio (EER)	15 BTU / w.h
Max. rated input current	25 A
Heating capacity	2,700 BTU / h (800 W)
Input power of heating	800 W
Air flow	≥294 CFM (≥500 m³/h)
Temperature range	61°F - 86 °F (16 C - 30 C)
Refrigerant	R410A
Outdoor unit waterproof level	IPX4
Indoor unit noise level	35 dB
Outdoor unit noise level	52 dB
Indoor unit dimension (L x W x H)	26.1 x 7.7 x 11.7 inch (663 x 197 x 296 mm)
Outdoor unit dimension (L x W x H)	35.5 x 9.4 x 20.4 inch (902 x 240 x 519 mm)
Indoor / outdoor unit weight	13.2 lbs (6.0 kg) 66.1 lbs (30.0 kg)

Model	Xm4830AL
PV Input	
Max. PV Open Circuit Voltage	150 Vdc
MPPT Operating Voltage Range	(Battery Voltage + 2 V) ~ 110 Vdc
Max. PV Input Power	400 W / 12 V, 800 W / 24 V, 1,200 W / 36 V, 1,600 W / 48 V
Battery	
Battery Type	Lead-acid / Lithium-ion / User-defined
Rated Voltage	12 / 24 / 36 / 48 Vdc
Voltage Range	8 ~ 64 Vdc
Rated Charging Current	30 A
MPPT Charging Mode	Buck Charging
Load	
Load Type	Resistive Load, Inductive Load, Capacitive Load
Rated Load Voltage	Equal to Battery Voltage 12 / 24 / 36 / 48 V
Rated Load Current	30 A
Load Operation Mode	Light Control, Light and Time Control, Manual Mode (Default), Debugging Mode, Normally Opened

Efficiency	
MPPT Tracking Efficiency	>99%
Max. Charging Conversion Efficiency	85% ~ 98% (10% ~ 100% of Load Power)
Communication	
TTL	Baud Rate 9,600 kps
RS485	RS485 Communication Port
General Specifications	
Weight	7.94 lbs. / 3.6 kg
Dimension	10.24 x 8.5 x 3.88 inch / 260 x 216 x 98.5 mm
Ingress Rating	IP32
Operating Temperature Range	-35°C ~ 65°C / -31°F ~ 149°F

Note: All data are based on ROYPOW standard test procedures. Actual performance may vary according to local conditions