

Air-Cooled LiFePO₄ Forklift Batteries

≈ **5°C** Lower than Standard Batteries

Engineered for optimized performance and extended runtime in light-duty material handling applications with frequent start-stop operations.



Features

Intelligent Forced
Air Cooling

Grade A
LFP Cell

Built-in **Fire**
Extinguishing System

10 Years of
Design Life

Intelligent
BMS

Smart
4G Module

Automotive-Grade
Manufacturing Quality

>3,500 Times
of Cycle Life

Applications



High-temperature
regions



Cargo handling
yards



Chemical industry
workplaces



Cold storage
warehouses



Steel mills



Coal plants



Battery Discharge Temperature Testing

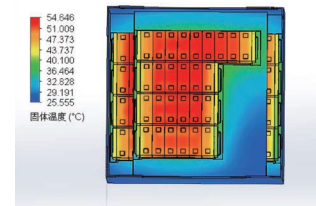
Testing condition: Discharge at 1C under 25°C ambient temperature.

**ROYPOW Forced Air
Cooling Solution**

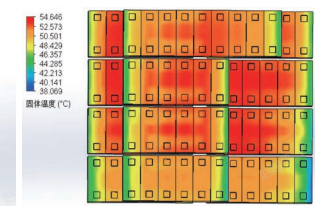
**5°C
Lower**

VS

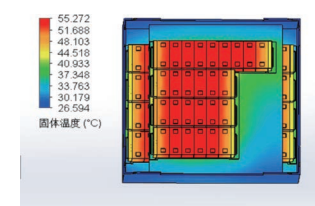
Natural Cooling Solution



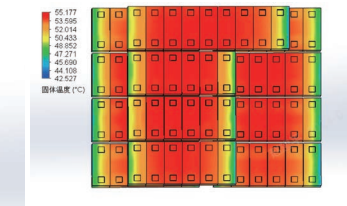
Before testing:
25.555°C - 54.646°C



After testing:
38.069°C - 54.646°C



Before testing:
26.594°C - 55.272°C



After testing:
42.527°C - 55.177°C

Testing result: After one hour of discharge, the ROYPOW forklift battery with forced air cooling maintains a temperature **~5°C lower** than the standard battery with natural cooling.

Technical Specifications

Item	F48560DZ	F80690AK	F80690AN	F80840K
Rated Voltage (V)	51.2	80	80	80
Voltage Range (V)	41.6~58.4	65~91.25	65~91.25	65~91.25
Rated Capacity (Ah)	560	690	690	840
Rated Energy (kWh)	28.67	55.2	55.2	67.2
Cycle Life (Times)	>3,500			
Continuous Charge / Discharge Current (A)	200 / 350	200 / 450	200 / 400	300 / 450
Peak Discharge Current (A)	420	540	480	540
Dimension (L x W x H, mm / inch)	1025 x 565 x 664 (40.35 x 25.82 x 26.14)	1020 x 980 x 760 (40.1 x 38.58 x 29.92)	1025 x 680 x 780 (40.35 x 26.77 x 30.71)	1025 x 999 x 770 (40.47 x 39.33 x 30.31)
Weight (kg / lbs)	960 / 2116	2070 / 4563	1420 / 2739	2100 / 4630
Counter Weight (kg / lbs)	732 / 1613	1731 / 3816	1110 / 2035	1335 / 2944
Ingress Rating	IP54			
Discharge Plug	Anderson SB350 Blue	REMA 320A Female	REMA 320A Female	REMA 320A Female
Charge Plug	REMA 320A Male	REMA 320A Male	REMA 320A Male	REMA 320A Male

Note: 1. Forklift battery solutions can be customized according to customer needs.

2. All data are based on ROYPOW standard test procedures, actual performance may vary according to local conditions.



sales@roypow.com

www.roypow.com