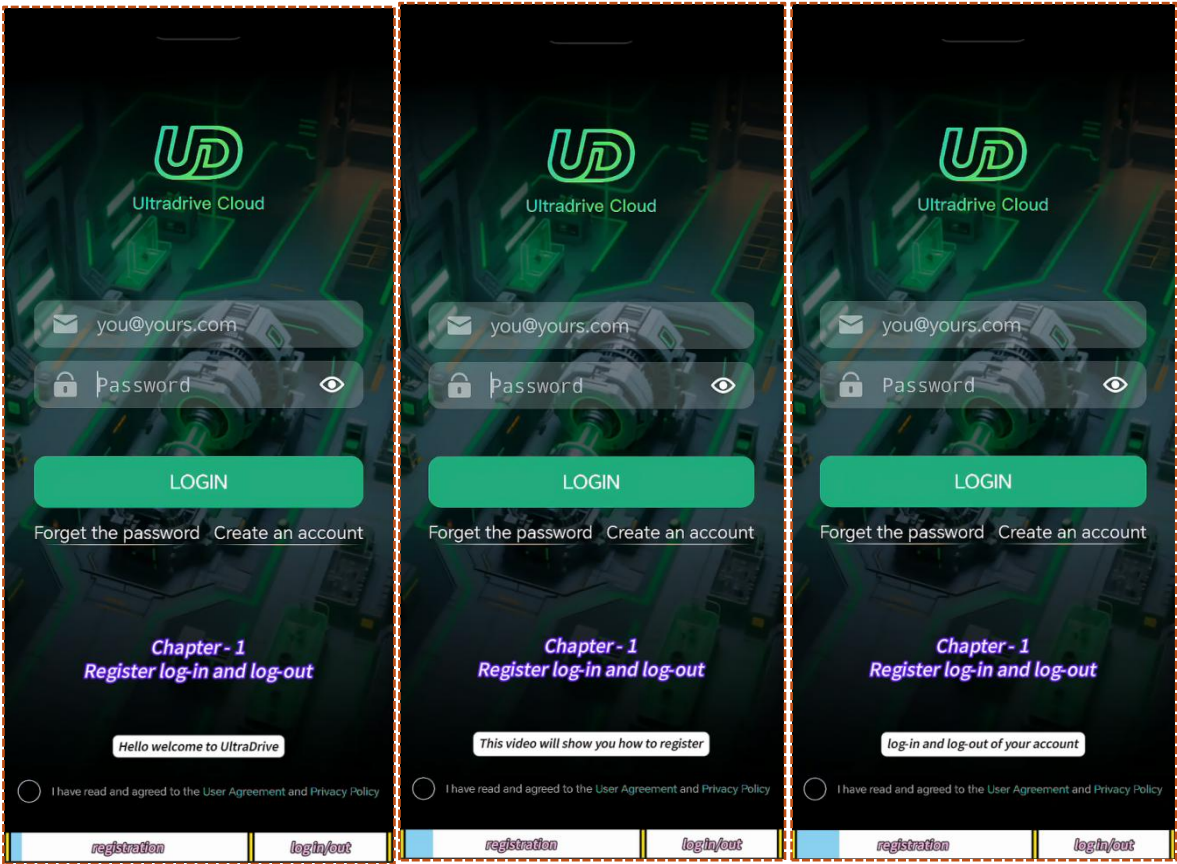
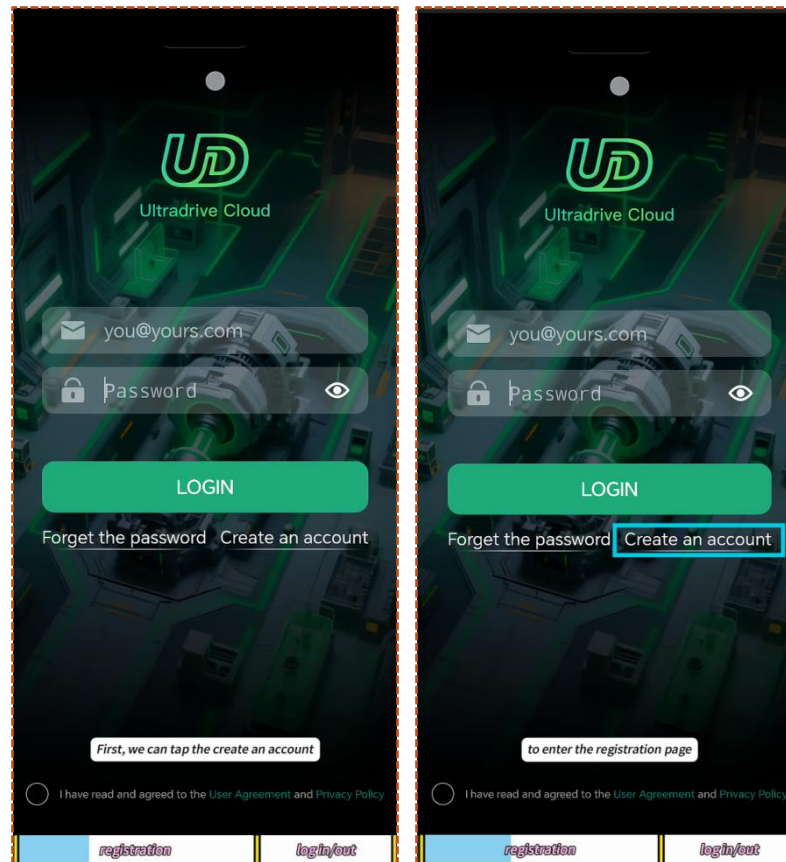


Chapter - 1 *Register log-in and log-out*



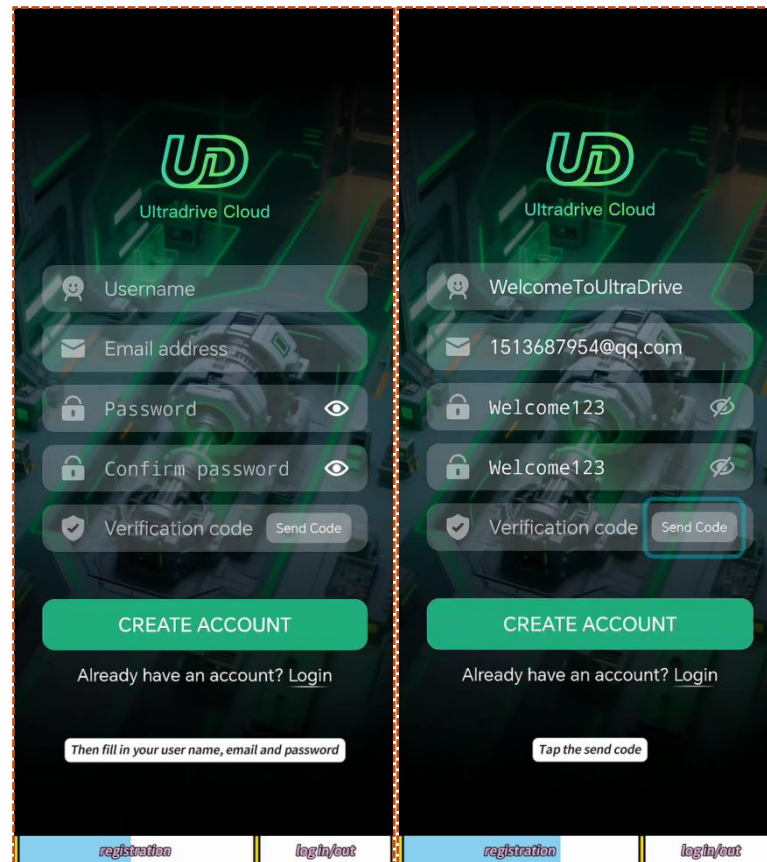
This section provides complete instructions for managing your UltraDrive account, including registration, login, logout, and account deletion.



1.1 Account Registration

To begin using UltraDrive, you must first create an account. Please follow these steps:

1. On the app's welcome screen, locate and tap the Create an account button. This action will navigate you to the dedicated registration page.



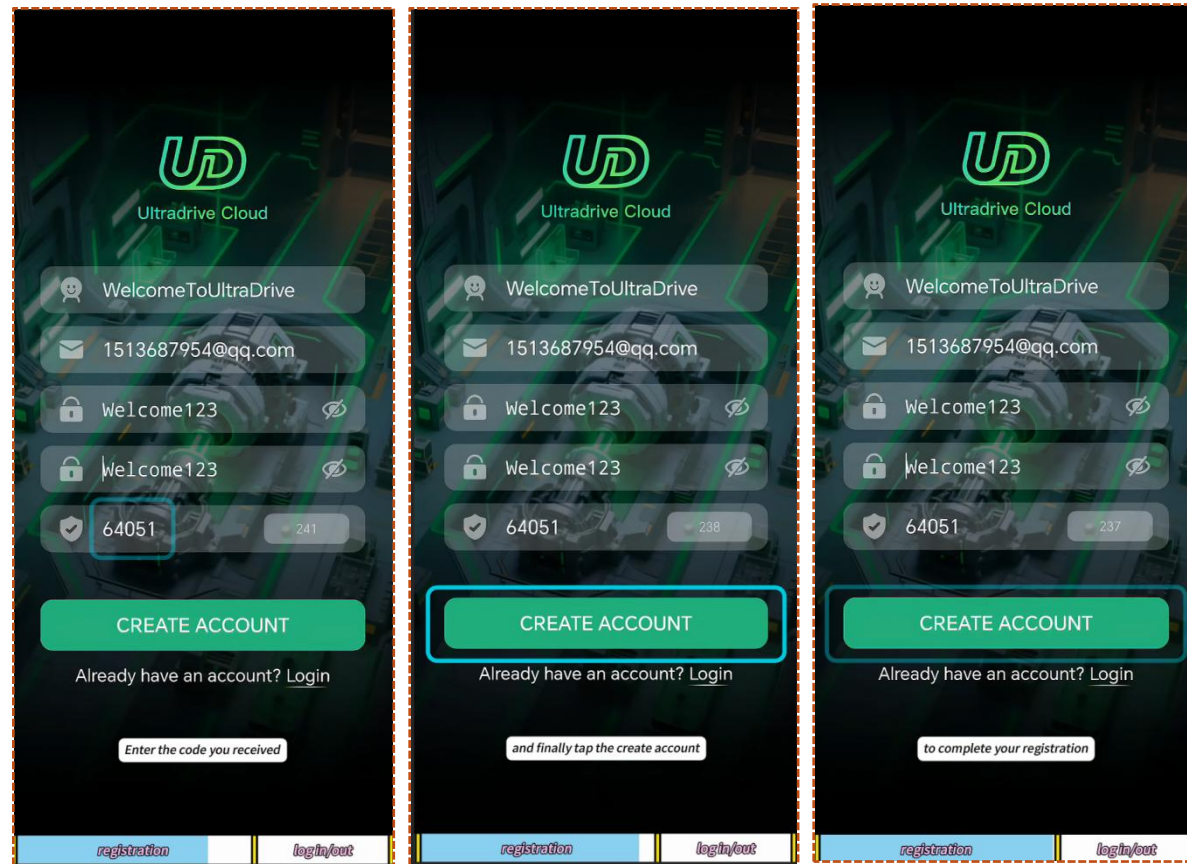
2. On the registration form, carefully fill in all required fields:

Username: Choose a unique name for identification.

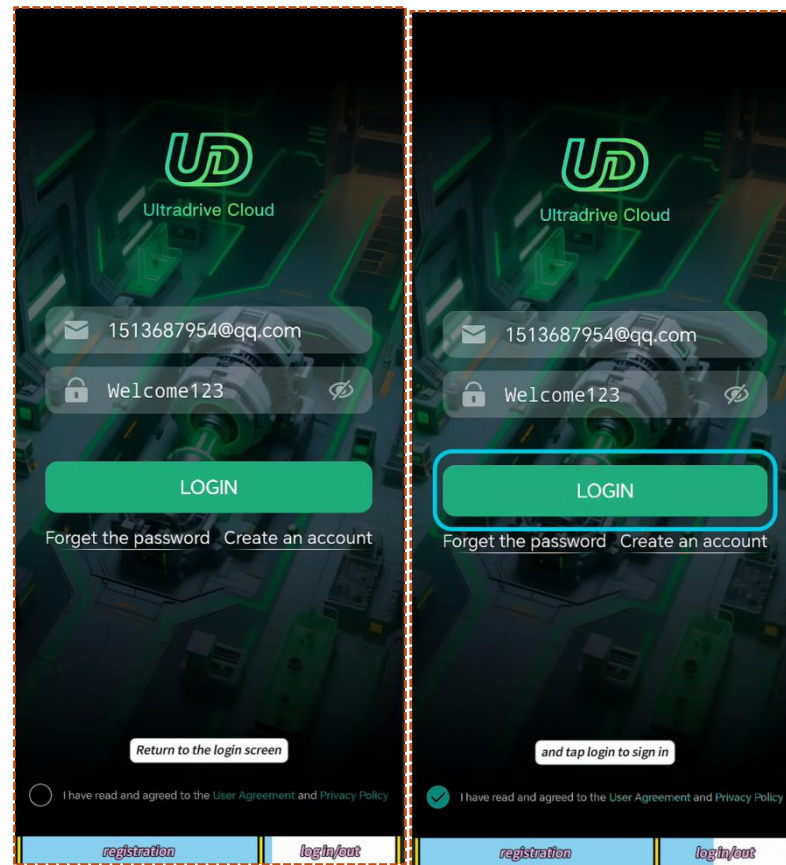
Email: Enter a valid email address. This will be used for verification and account recovery.

Password: Create a secure password following the on-screen requirements.

3. After submitting your details, tap the Send code button. The system will automatically generate and send a verification code to the email address you provided.



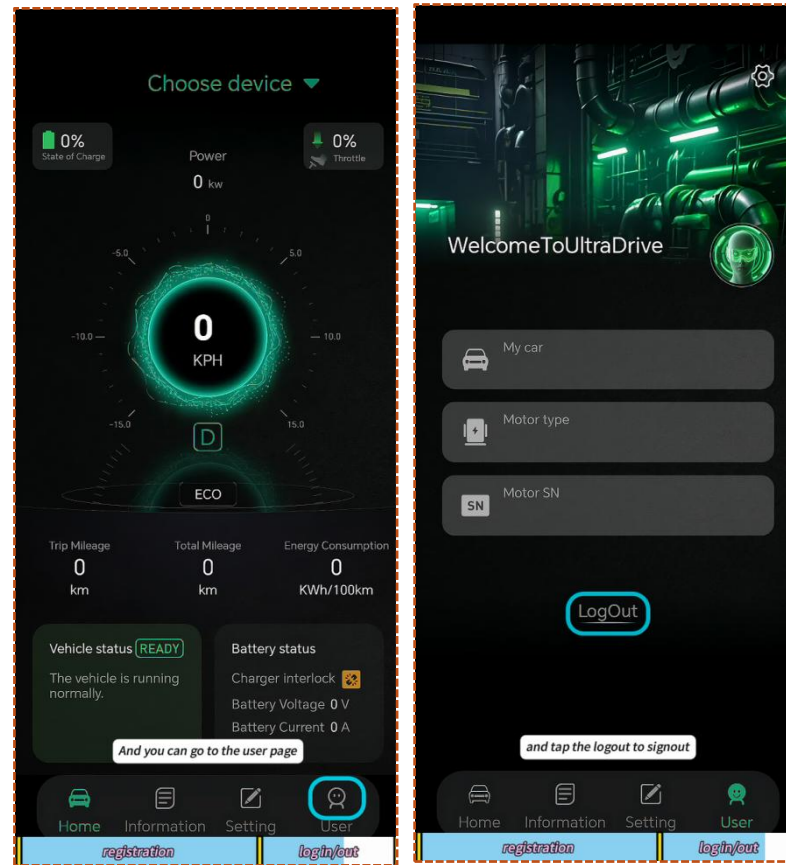
4. Check your email inbox (including spam/junk folders) for the message from UltraDrive. Enter the numeric verification code into the designated field in the app.
5. Finally, tap the Create account button to complete the registration process. A confirmation message will indicate successful account setup.



1.2 Account Login

Once registered, you can access your account at any time.

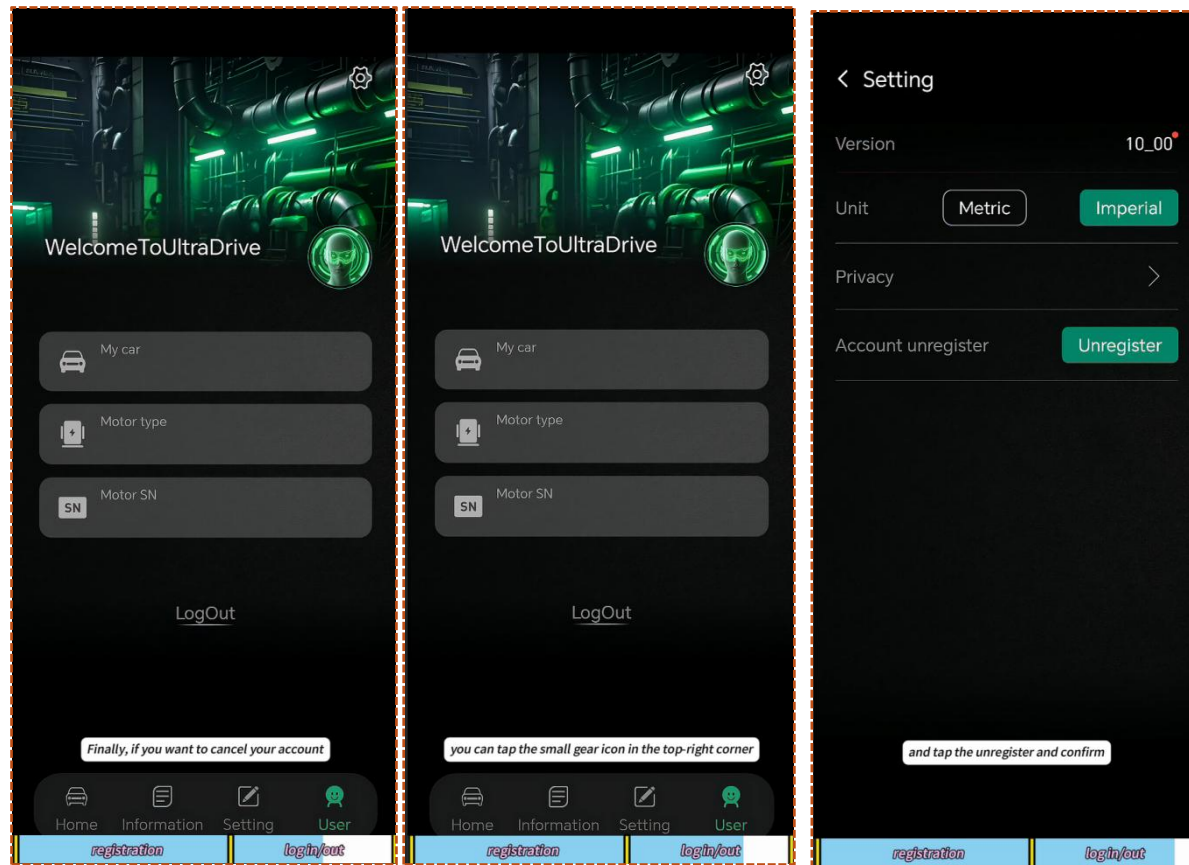
1. Launch the UltraDrive app to return to the main login screen.
2. In the respective fields, enter the Email and Password associated with your account.
3. Review the Terms of Service and Privacy Policy, then check the box to indicate your agreement. This step is mandatory to proceed.
4. Tap the Login button to sign in. You will be directed to your personal dashboard upon successful authentication.



1.3 Logging Out

To securely end your current session without affecting your account data:

1. Navigate to the User Page
2. Locate and tap the Logout button at the bottom of the page. You will be safely returned to the initial login screen.

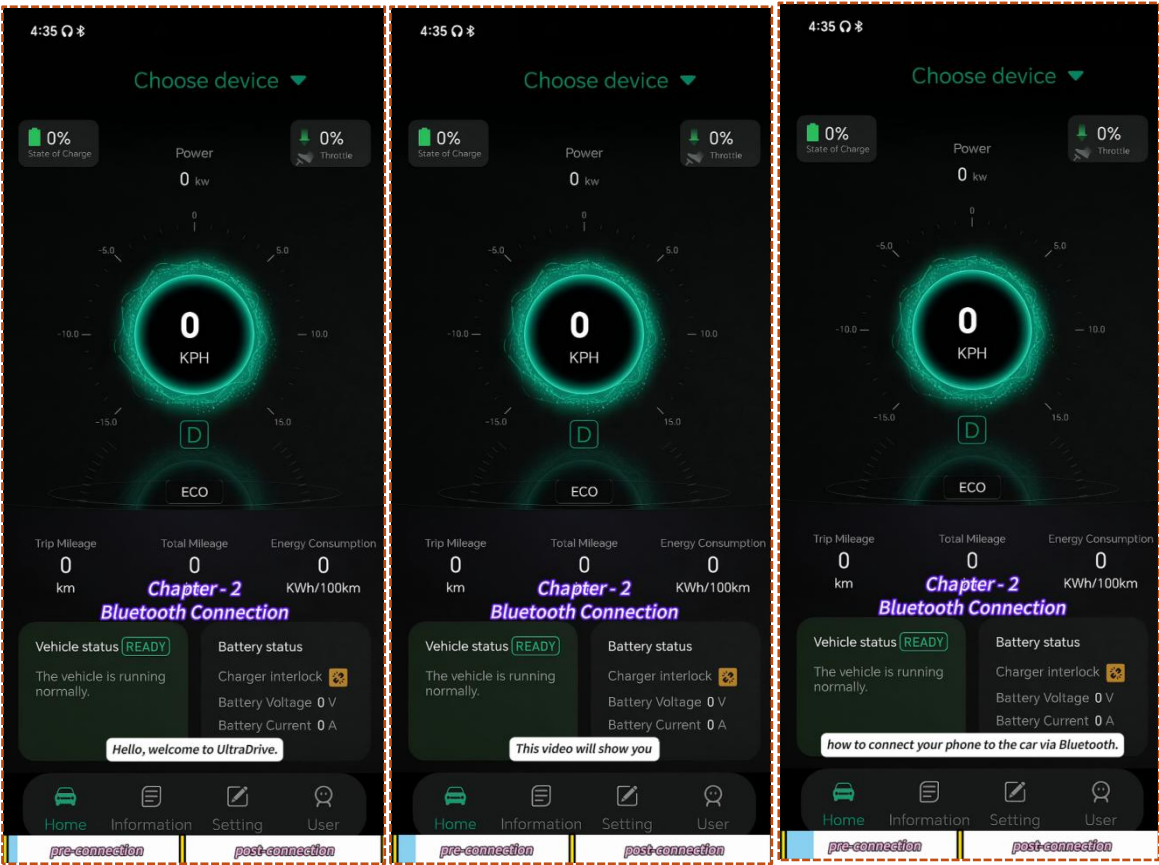


1.4 Permanent Account Deletion (Unregister)

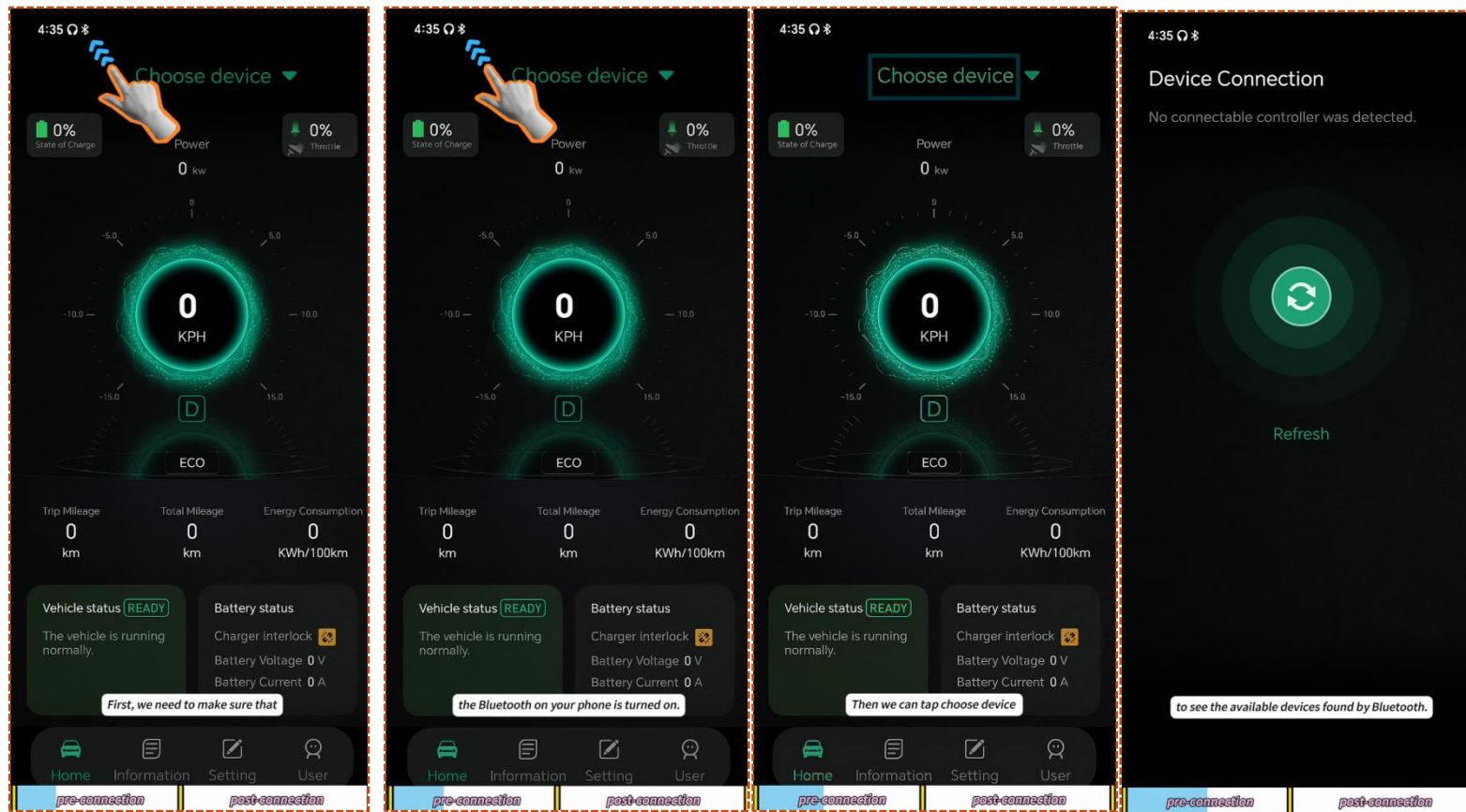
If you wish to permanently delete your UltraDrive account and all associated data, please proceed with caution, as this action is irreversible.

1. From your user page, tap the small gear icon located in the top-right corner to access the Settings menu.
2. Within Settings, find and select the Unregister option.
3. Confirm your intent to proceed. Your account and all its data will be permanently removed from our system.

Chapter - 2 Bluetooth Connection



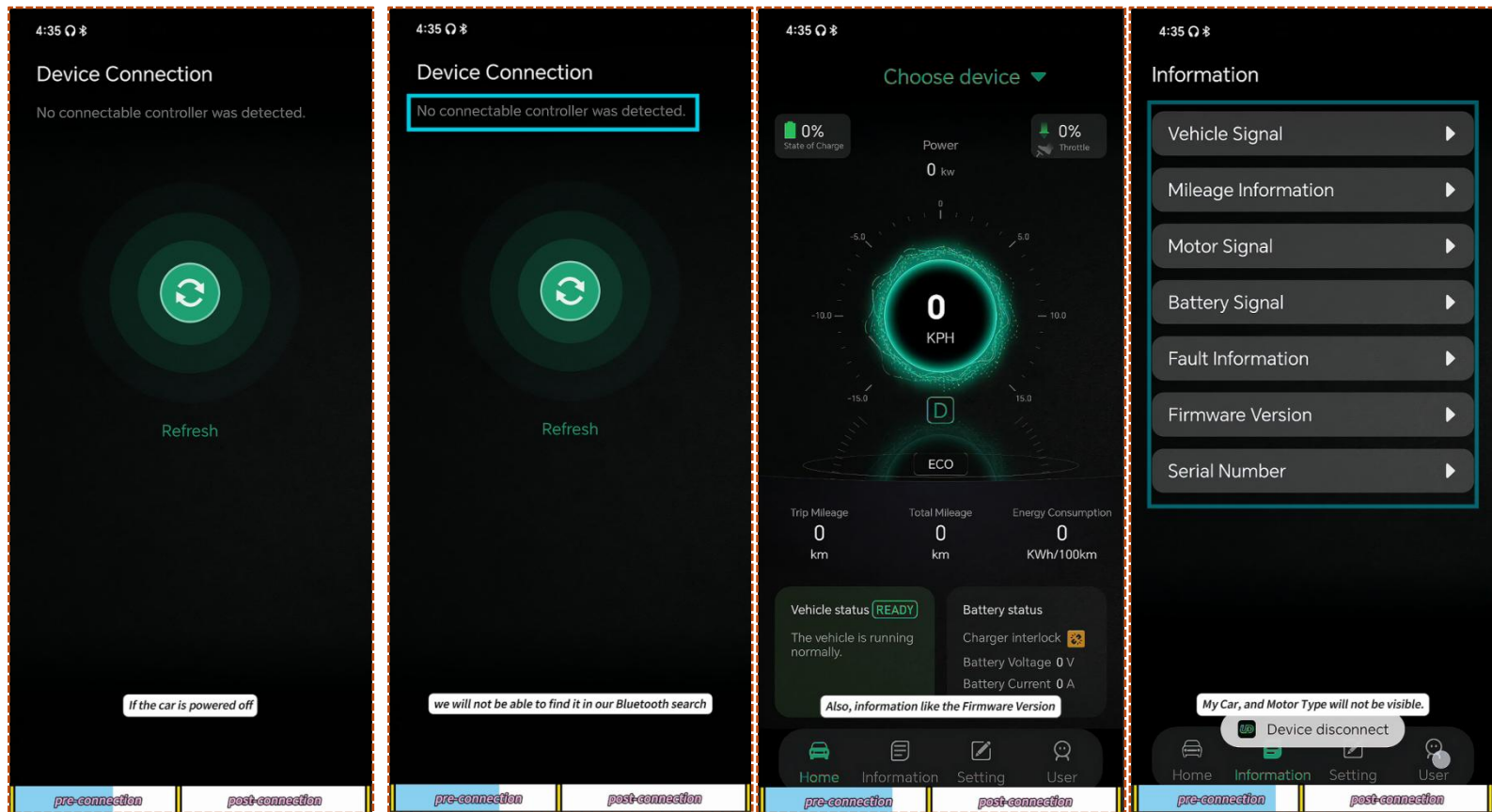
This section provides the instructions for establishing a Bluetooth connection between your mobile device and your UltraDrive vehicle.



2.1 Initial Setup

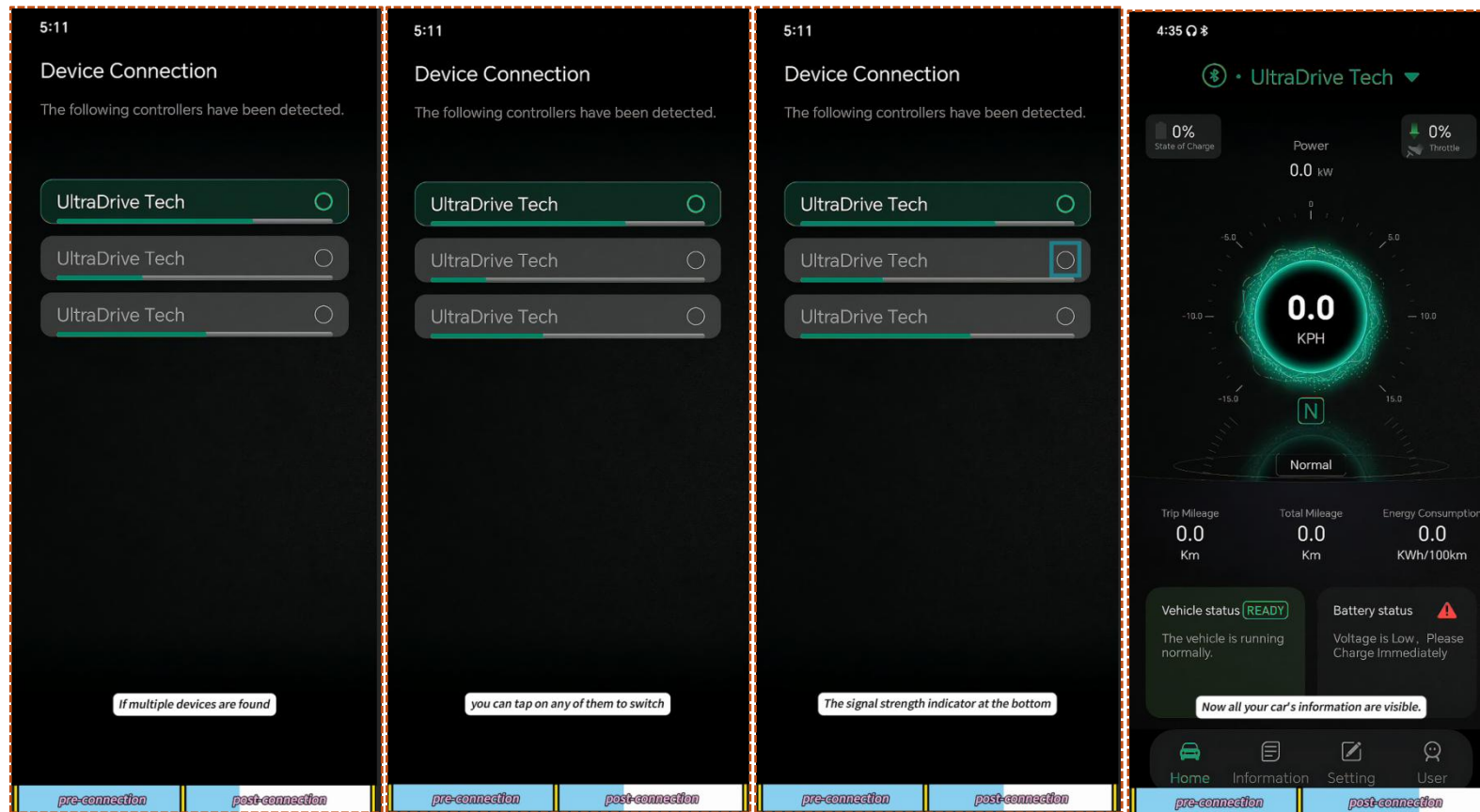
Before initiating the pairing process, ensure the following:

1. Ensure the Bluetooth function on your mobile phone is enabled.
2. Within the UltraDrive app, tap the Choose Device button to initiate a search for available Bluetooth devices.



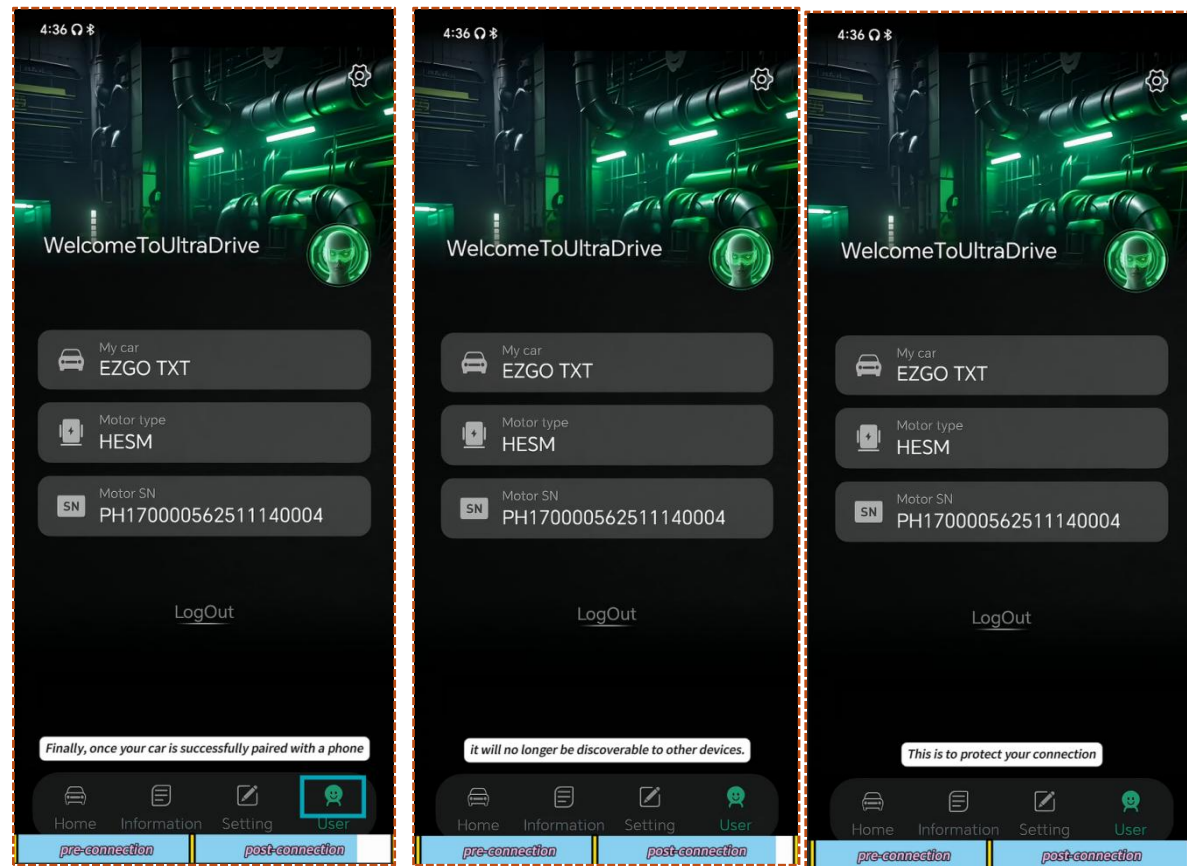
2.2 Device Discovery & Selection

1. If your vehicle is powered off, it will not appear in the list of discoverable devices. Consequently, detailed information such as Firmware Version, My Car, and Motor Type will not be accessible at this stage.
2. Power on your vehicle and tap Choose Device again to refresh the search. Your vehicle should now appear in the list.
- 3.If multiple devices are found, you may tap on any listed device to select and attempt a connection with it.



2.3 Connection Status

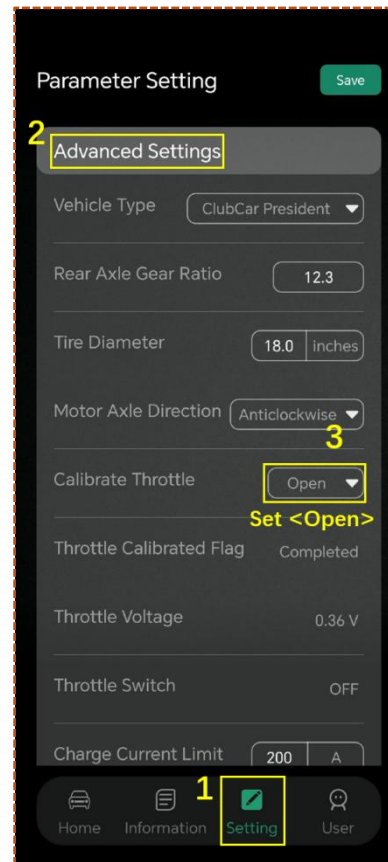
1. A signal strength indicator is displayed at the bottom of the connection screen. The quality of this signal depends on your proximity to the vehicle.
2. Once successfully connected, all your vehicle's information, including the details mentioned above, will become visible and accessible within the app.



2.4 Connection Security Note

For security purposes, once your vehicle is successfully paired with a phone, it will typically stop being discoverable to other Bluetooth devices. This protects your connection from unauthorized access.

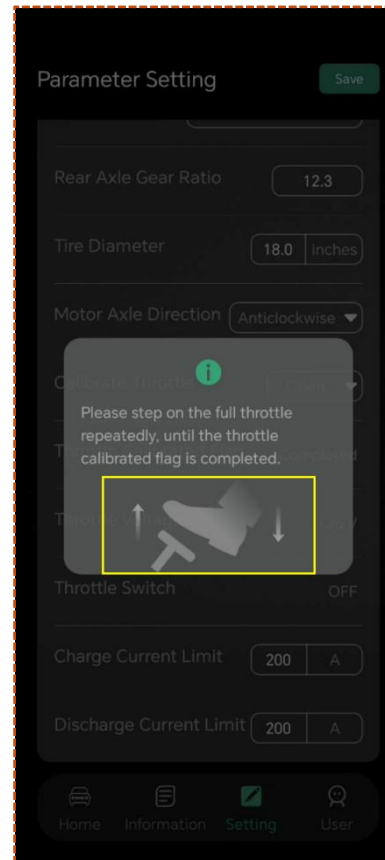
Chapter - 3 *Calibrate Throttle*



This section outlines the procedure for calibrating the accelerator (throttle) pedal of your UltraDrive vehicle. Calibration ensures the vehicle's control system accurately interprets the pedal's position.

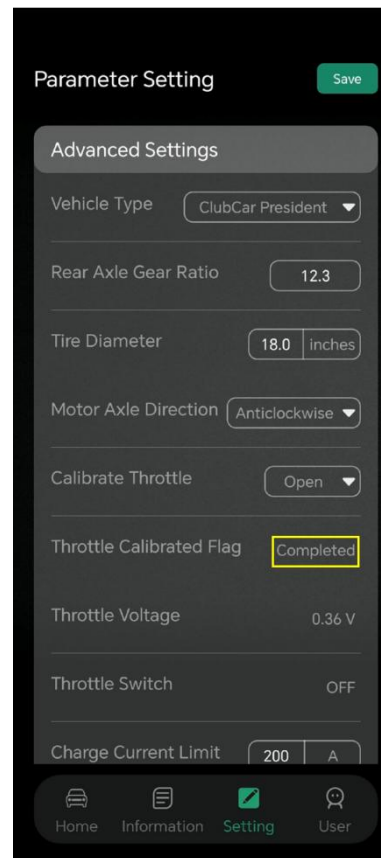
3.1 Preparation

1. Navigate to the Settings menu within the UltraDrive app.
2. Select Advanced Settings to access specialized vehicle controls.
3. Locate and toggle the Calibrate Throttle option to the "Open" position. This action prepares the vehicle's electronic control unit (ECU) to receive and learn the pedal's input range.



3.2 Calibration Procedure

1. Ensure the vehicle's gear selector is in the Park (P) position. This safety measure prevents any unintended vehicle movement during the calibration process.
2. With the calibration mode active, perform the following pedal cycle sequence:
 - Fully depress the accelerator pedal until it reaches its physical limit.
 - Completely release the accelerator pedal to its resting position.
 - Repeat this full depress-and-release cycle approximately three (3) times in a steady, consistent manner.
3. The vehicle's system will automatically process these inputs. Continue the cycle until a visual or textual confirmation ("Completed") appears on the app interface or the vehicle's display.



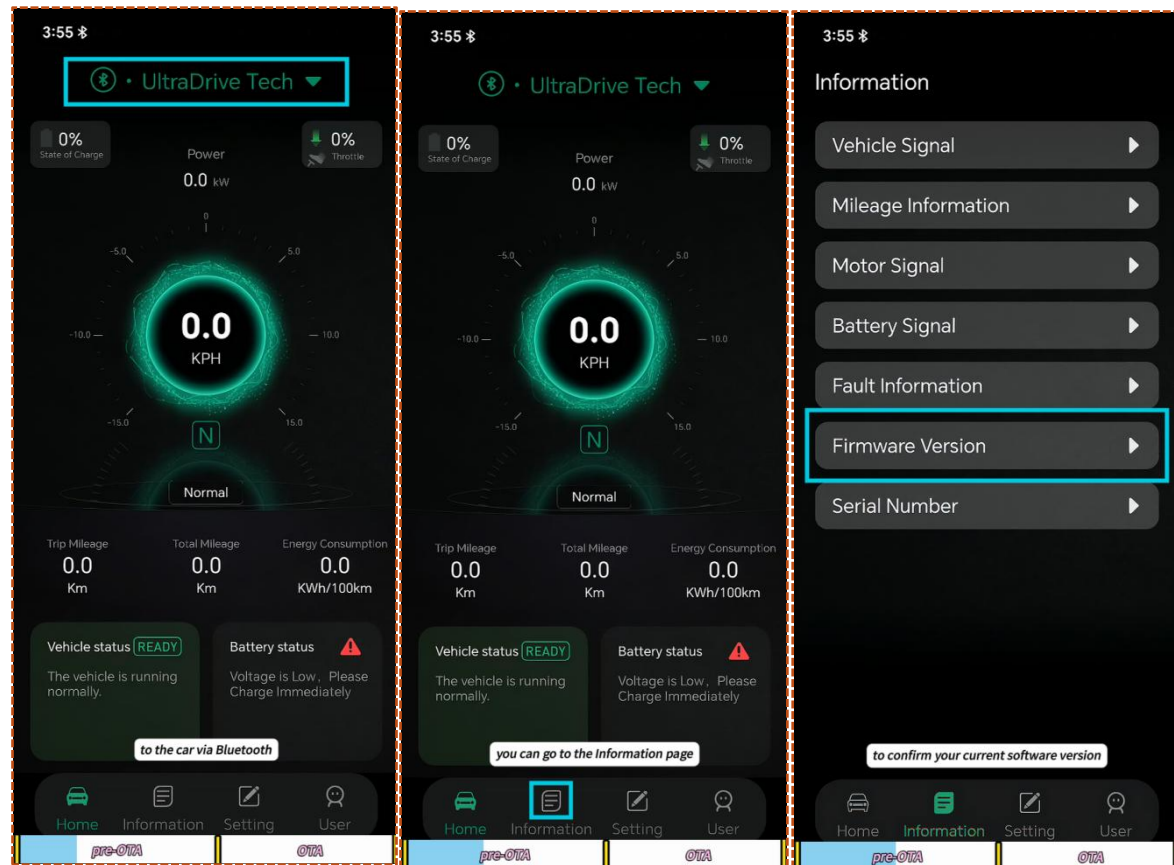
3.3 Post-Calibration

Once the completion flag is confirmed, the calibration data is stored. It is recommended to perform a brief, cautious functional test by gently pressing the accelerator to verify that the motor responds as expected to pedal inputs.

Chapter - 4 *OTA*



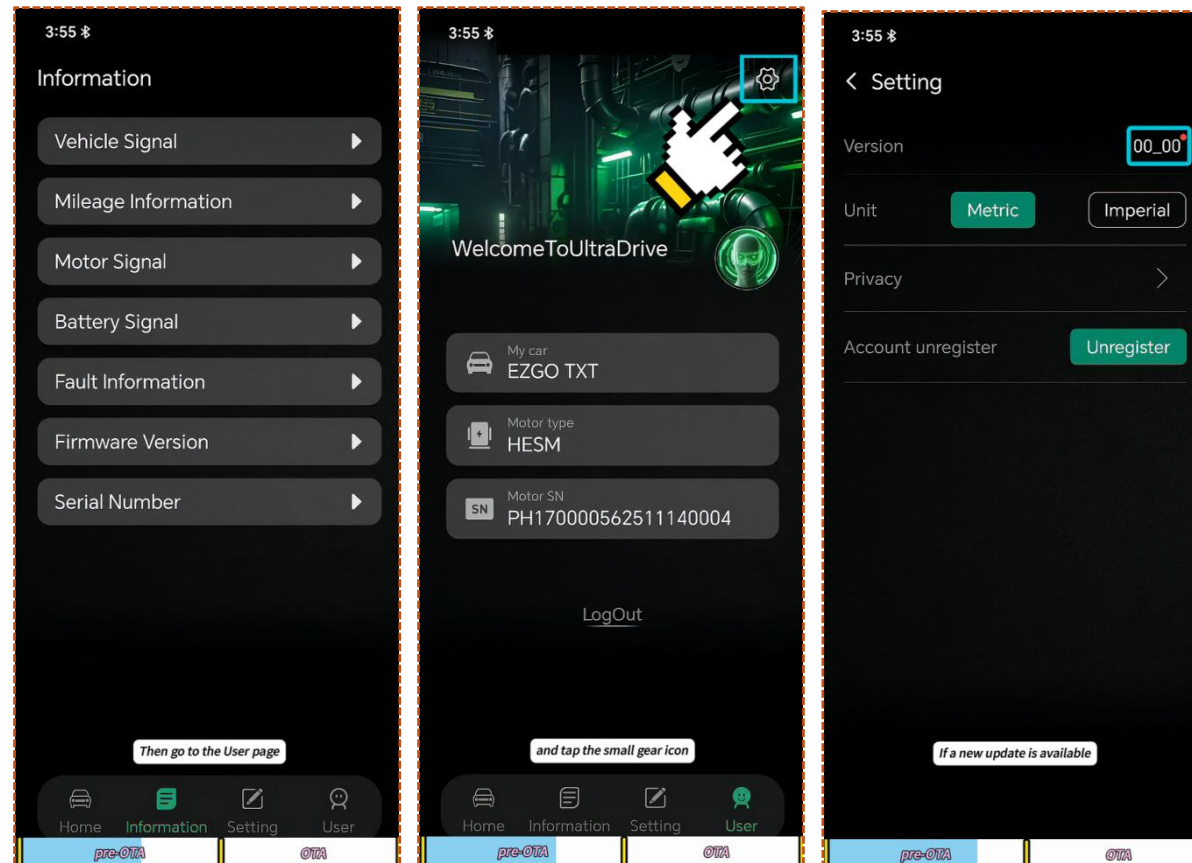
This section provides instructions for performing an Over-the-Air (OTA) firmware update for your UltraDrive vehicle using a Bluetooth connection. This process ensures your vehicle's software remains up-to-date with the latest features and improvements.



4.1 Prerequisites

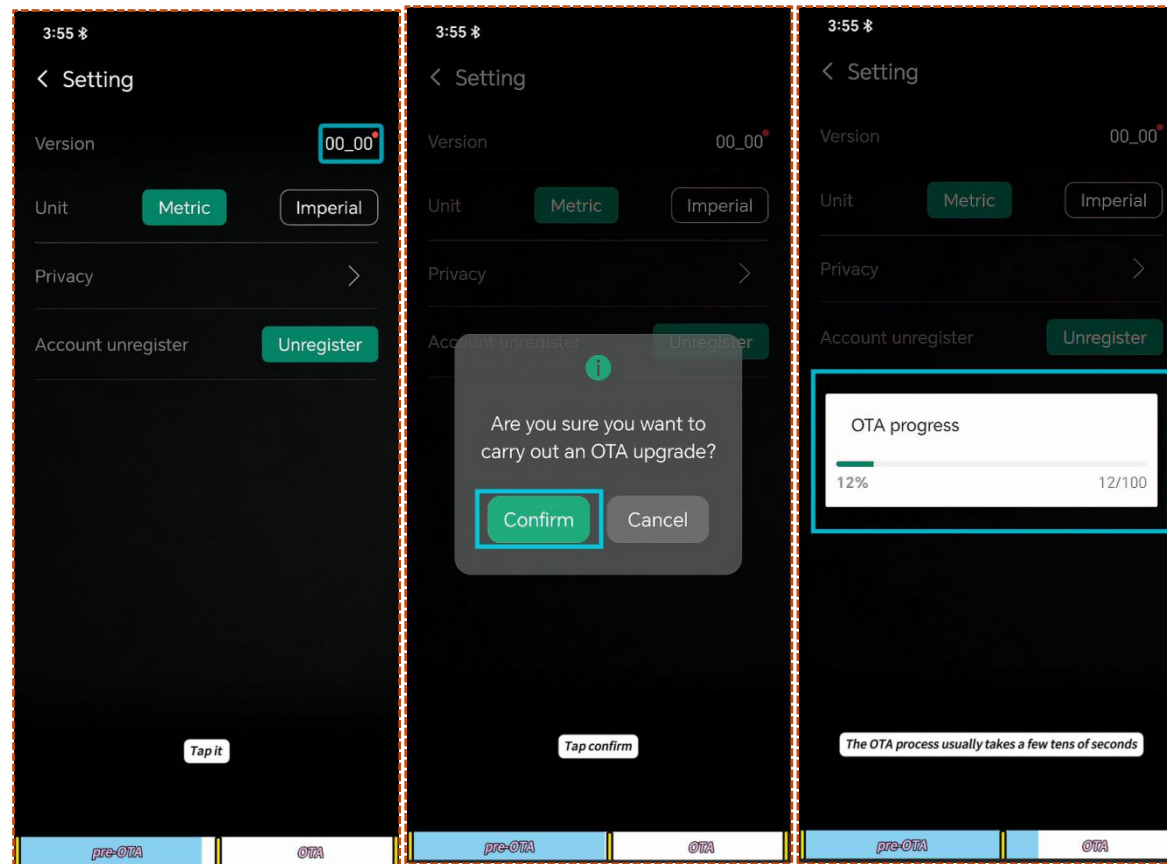
Before initiating an update, confirm the following:

1. Bluetooth Connection: Your mobile phone must be stably connected to the vehicle via Bluetooth, as established in Section 2.
2. Vehicle Power: The vehicle must remain powered on throughout the entire update process. A power interruption may cause the update to fail.
3. Current Version Verification: Navigate to the Information Page within the app. Tap the Firmware Version field to view the currently installed software version.



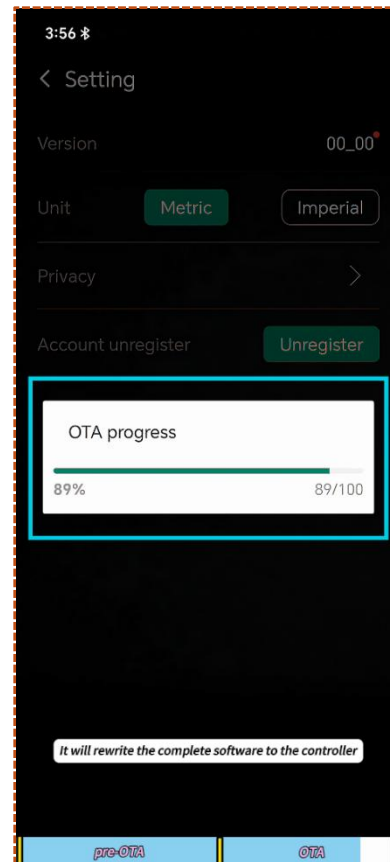
4.2 Checking for Updates

1. Navigate to the User Page.
2. Tap the small gear icon on the top-right corner to access the Settings menu.
3. Within Settings, locate the Software Version menu item.
4. If a new update is available from the server, a small red dot (notification indicator) will appear on the top-right corner of this menu item.



4.3 Executing the Update

1. Tap the Software Version menu item (with the red dot) to proceed.
2. A confirmation screen will display update details. Review this information and tap Confirm to begin the download and installation process.
3. The OTA update process will commence. This typically completes in tens of seconds. Please maintain a stable Bluetooth connection and do not power off the vehicle or the app during this time.



4.4 Important Notes & Troubleshooting

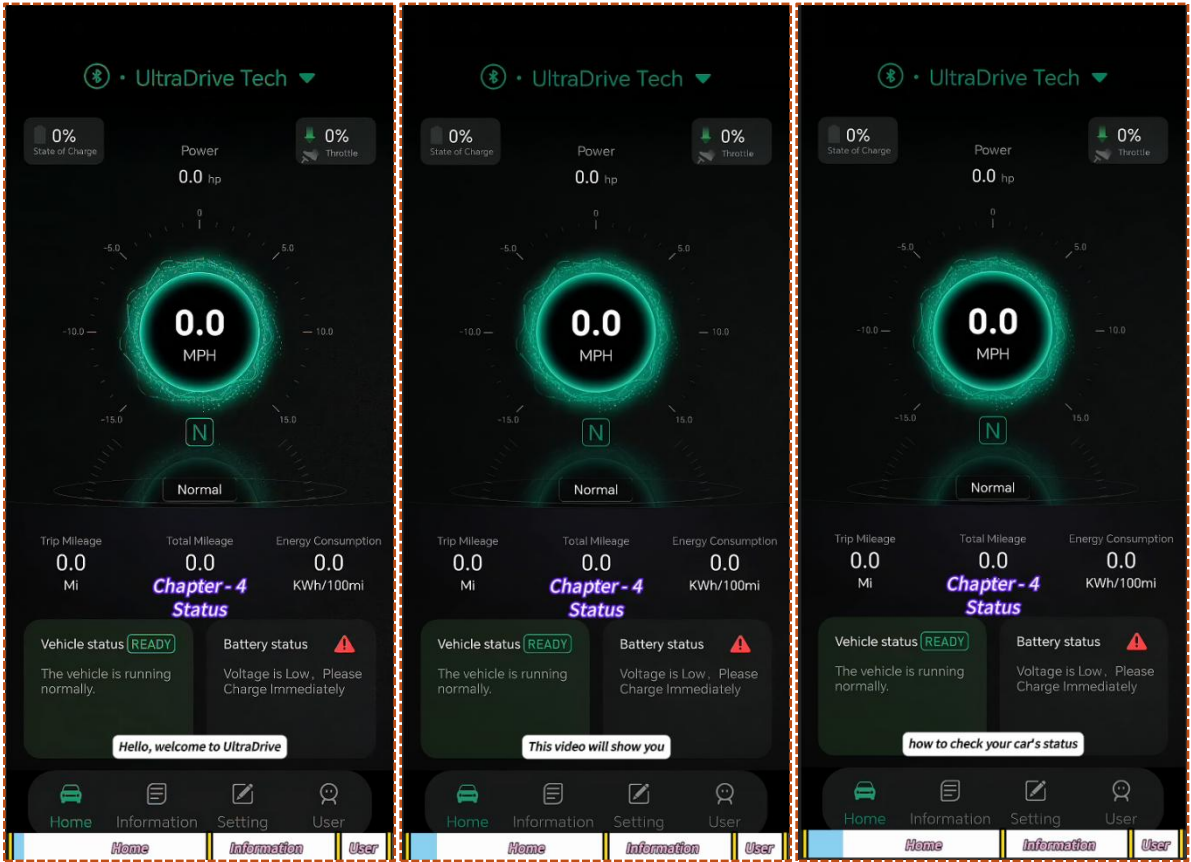
Stable Connection Required: A stable Bluetooth connection between your phone and the vehicle is critical for successful data transmission. Moving the phone away from the vehicle during the update is not recommended.

Interruption Handling: If the OTA process is interrupted unexpectedly (e.g., due to connection loss or power failure), the software installation on the vehicle controller may be incomplete.

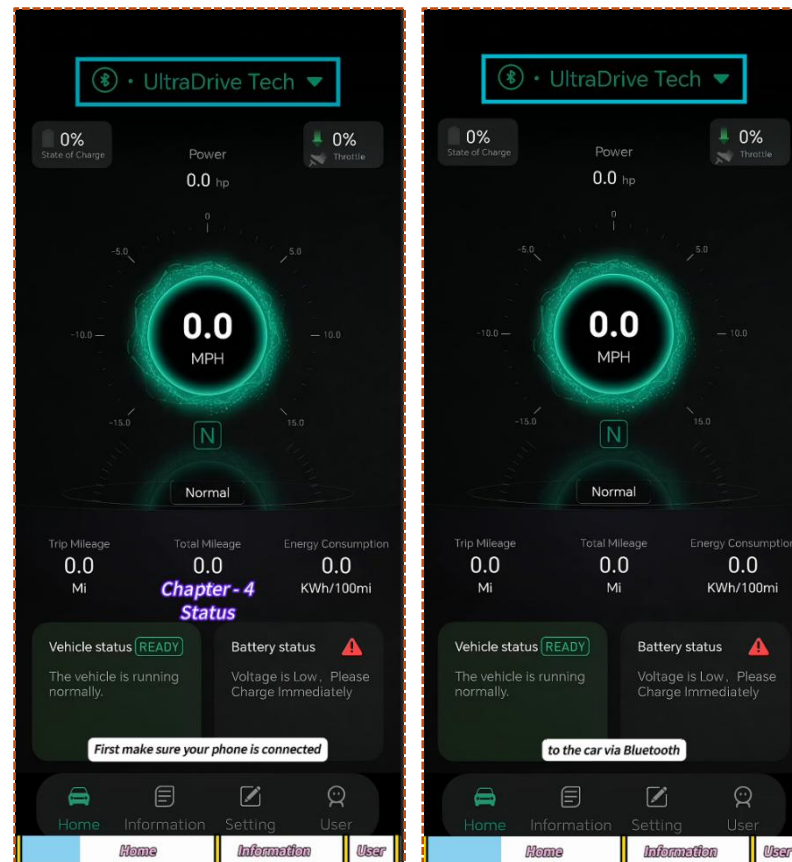
Do not be alarmed. In this event, you can simply restart the OTA process from the beginning (Section 4.2).

The system is designed to safely rewrite the complete software package to the controller, resolving any incomplete state from the previous attempt.

Chapter - 5 *Status*

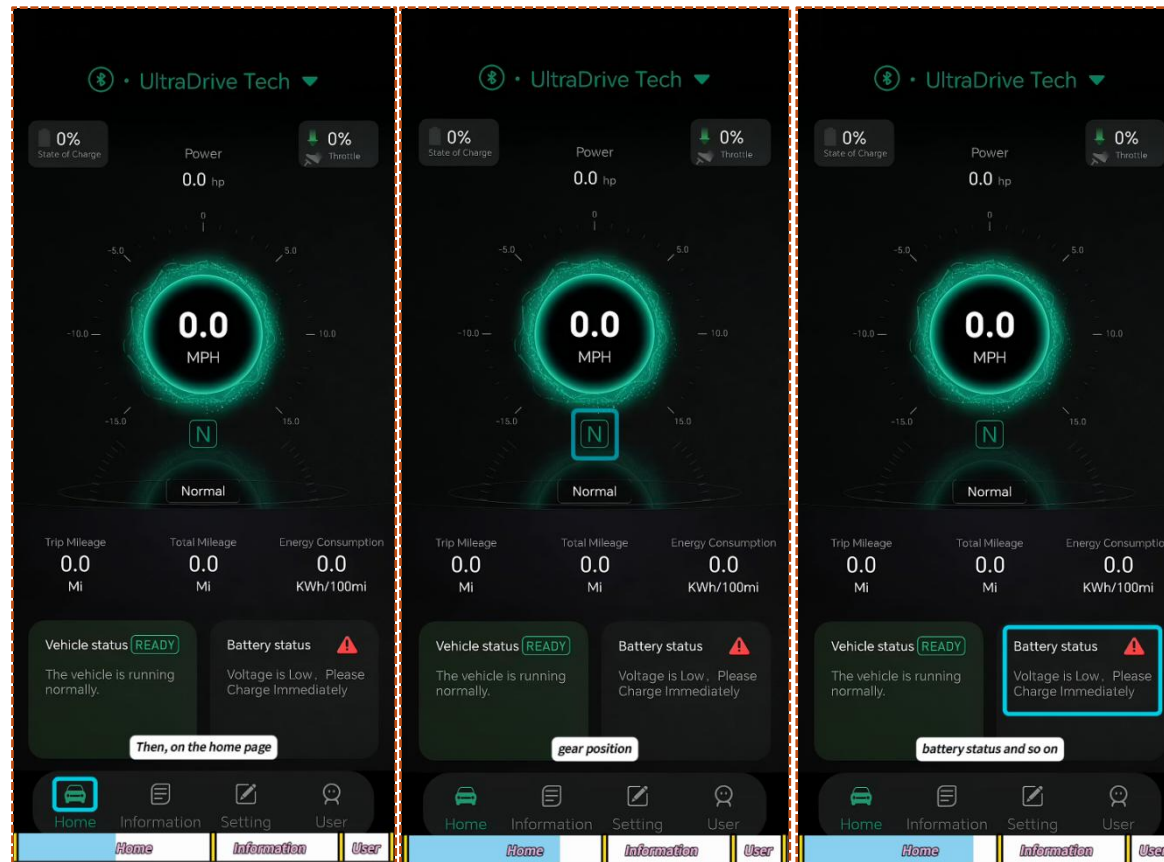


This section describes how to view various real-time status and detailed information for your UltraDrive vehicle through the app.



5.1 Connection Prerequisite

1. Before proceeding, ensure your phone has successfully established and maintains a Bluetooth connection with the vehicle.
2. All status data is transmitted in real-time via this connection.

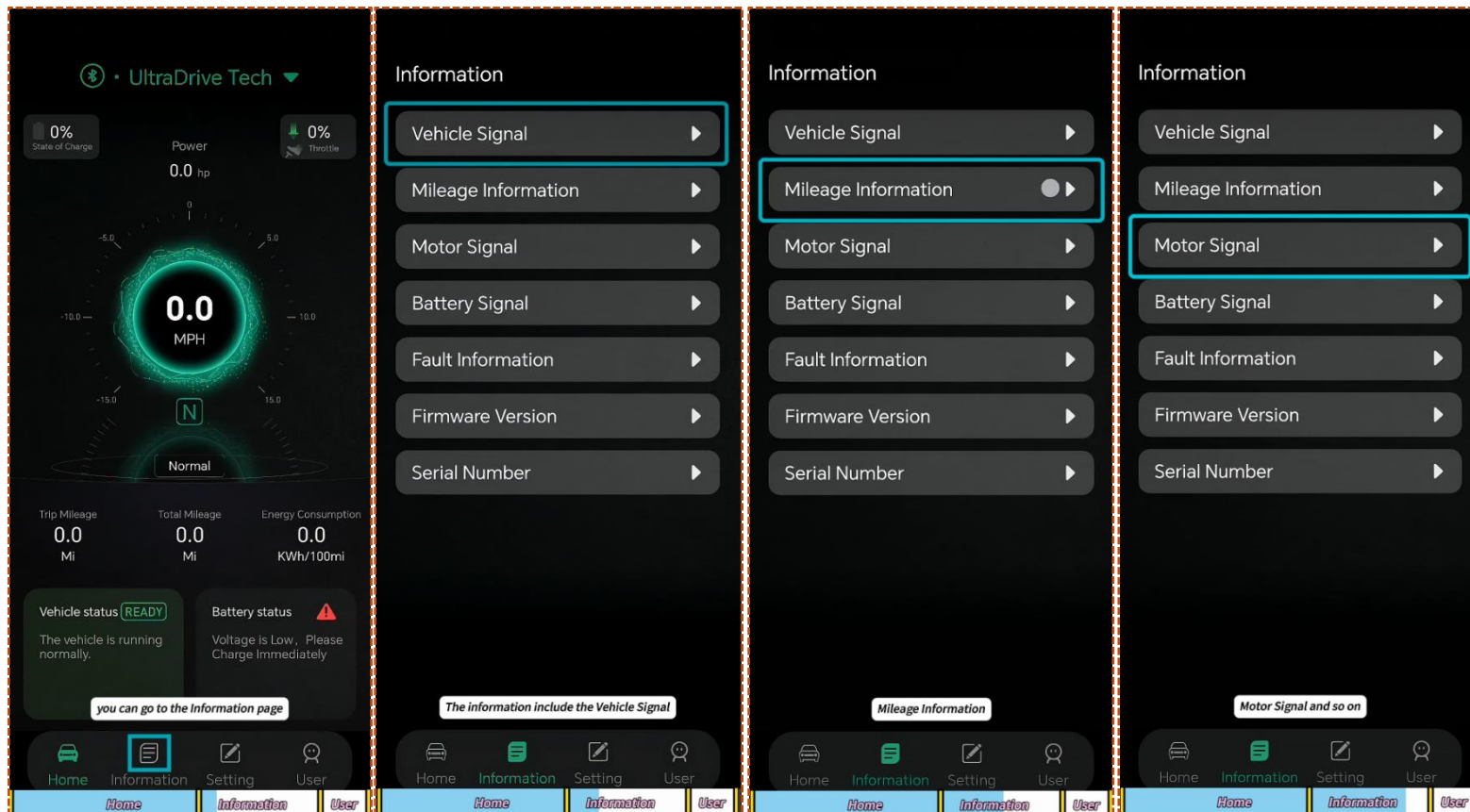


5.2 Viewing Common Real-Time Status (Home Page)

Upon successful connection, the app's Home Page displays a set of core, frequently-used vehicle status parameters, typically including but not limited to:

1. State of Charge (SOC): Displays the current remaining battery capacity as a percentage.
2. Gear Position: Indicates the vehicle's current gear selection (e.g., Park 'P', Drive 'D').
3. Battery Status: Provides key summary information such as battery health, voltage, or temperature.
4. Other common readings such as total odometer mileage and vehicle ready status.

This page is designed to provide a quick overview of your vehicle's operational health.



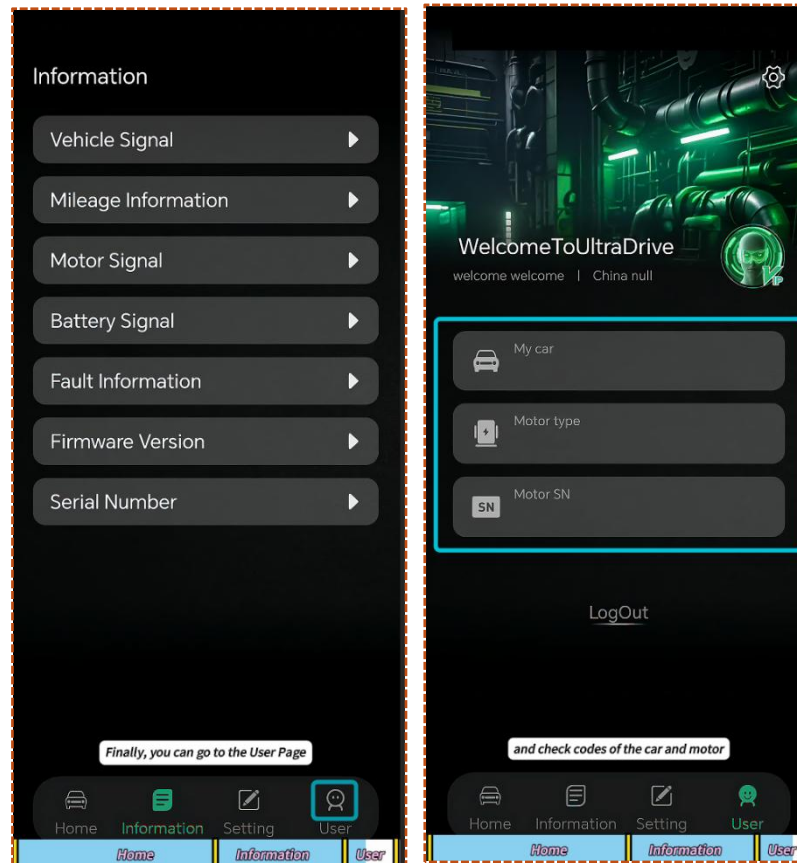
5.3 Viewing Detailed Real-Time Data (Information Page)

To access to a more comprehensive set of specialized, real-time vehicle parameters, navigate to the Information Page.

This page provides categorized, detailed data streams, typically including the following groups:

1. Vehicle Signals: Such as vehicle speed, accelerator pedal position, and brake signal status.
2. Mileage Information: Such as trip mileage, and total accumulated mileage.
3. Motor Signals: Such as motor RPM, torque, and temperature.
4. Battery Details: Such as individual cell voltages, battery pack temperature, and charge/discharge current.

This page is intended for scenarios requiring in-depth insight into vehicle operating parameters or preliminary diagnostics.



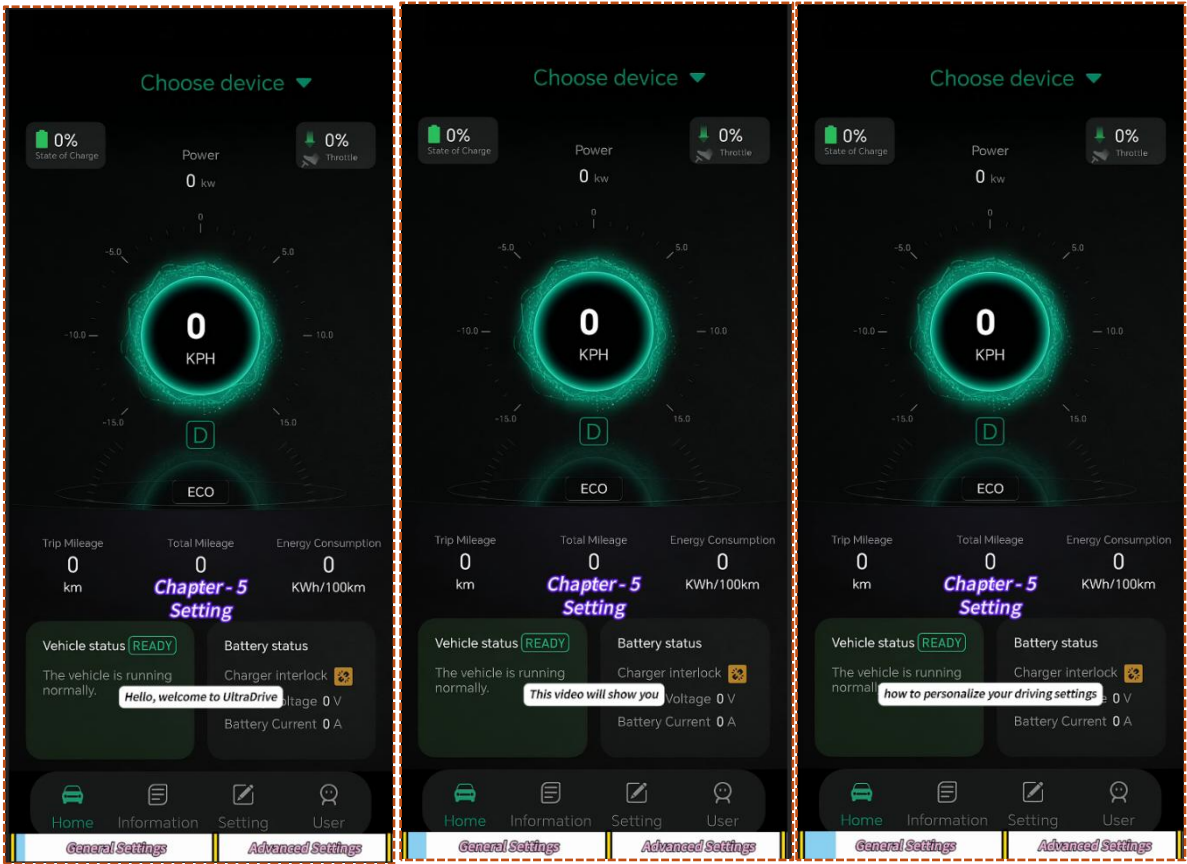
5.4 Viewing Vehicle and Motor Codes (User Page)

Finally, you can access the vehicle's identification and important coding information through the User Page. Within this page, you can view:

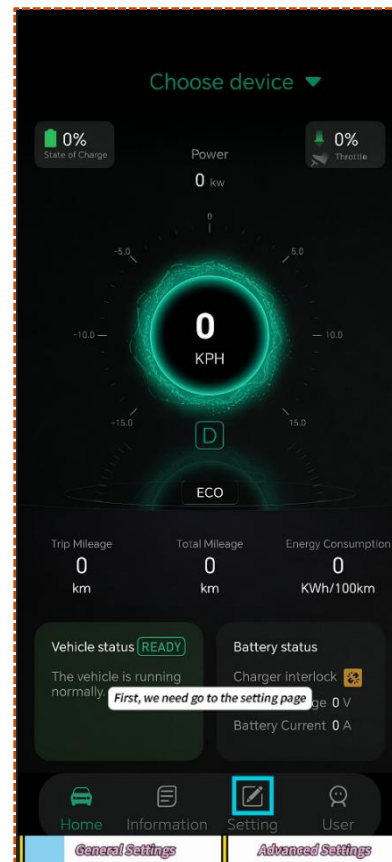
1. Vehicle Identification Code (e.g., VIN or similar unique identifier).
2. Motor Serial Number or specific motor codes.

These codes serve as unique identifiers for your vehicle and may be required when seeking after-sales service, technical support, or for specific registration purposes.

Chapter - 6 *Setting*

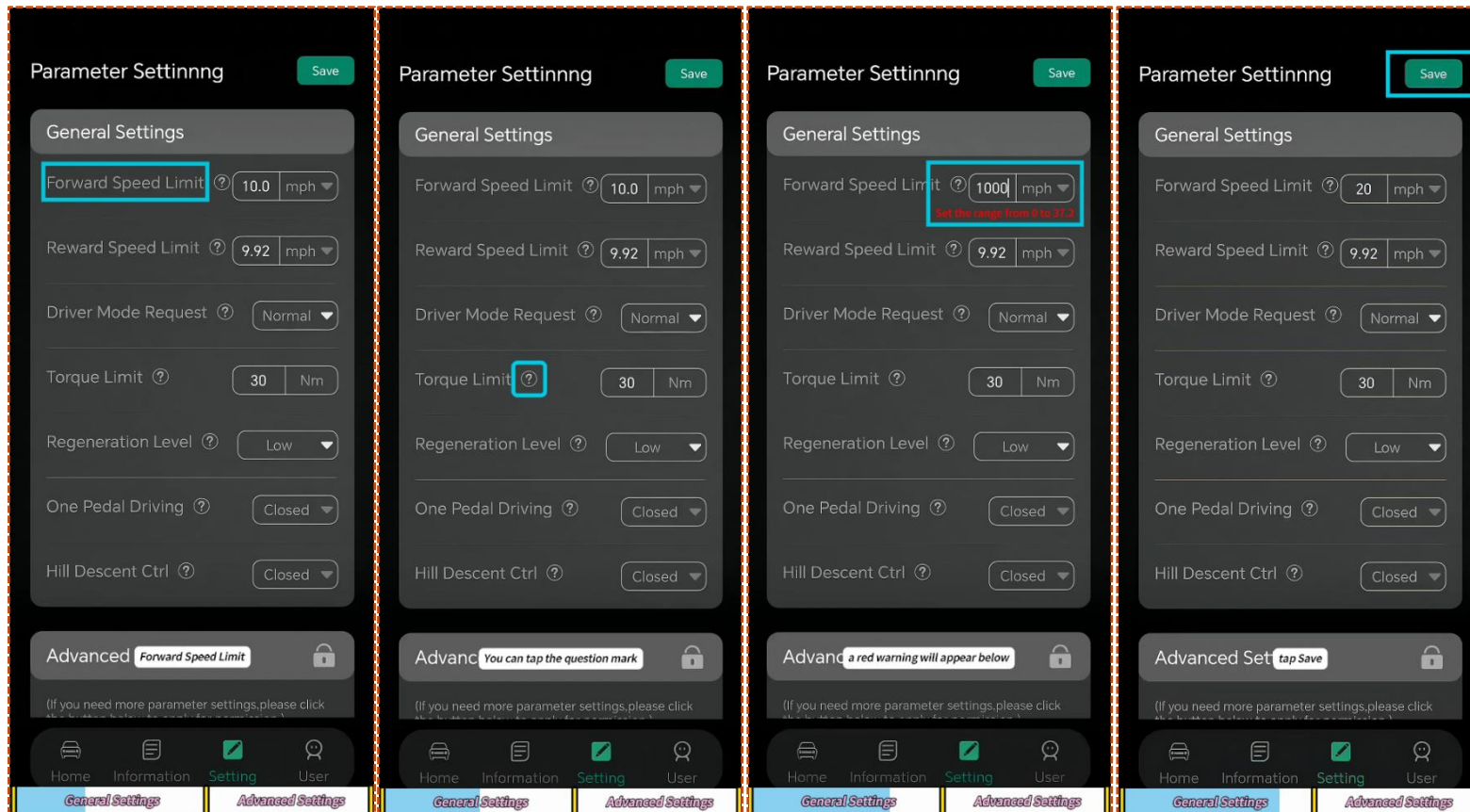


This section explains how to configure and personalize your UltraDrive vehicle's driving parameters according to your preferences. Settings are organized into general and advanced categories.



6.1 Accessing the Settings Page

Navigate to the Settings Page from the main application menu. This page serves as the central hub for adjusting vehicle behavior and performance parameters.

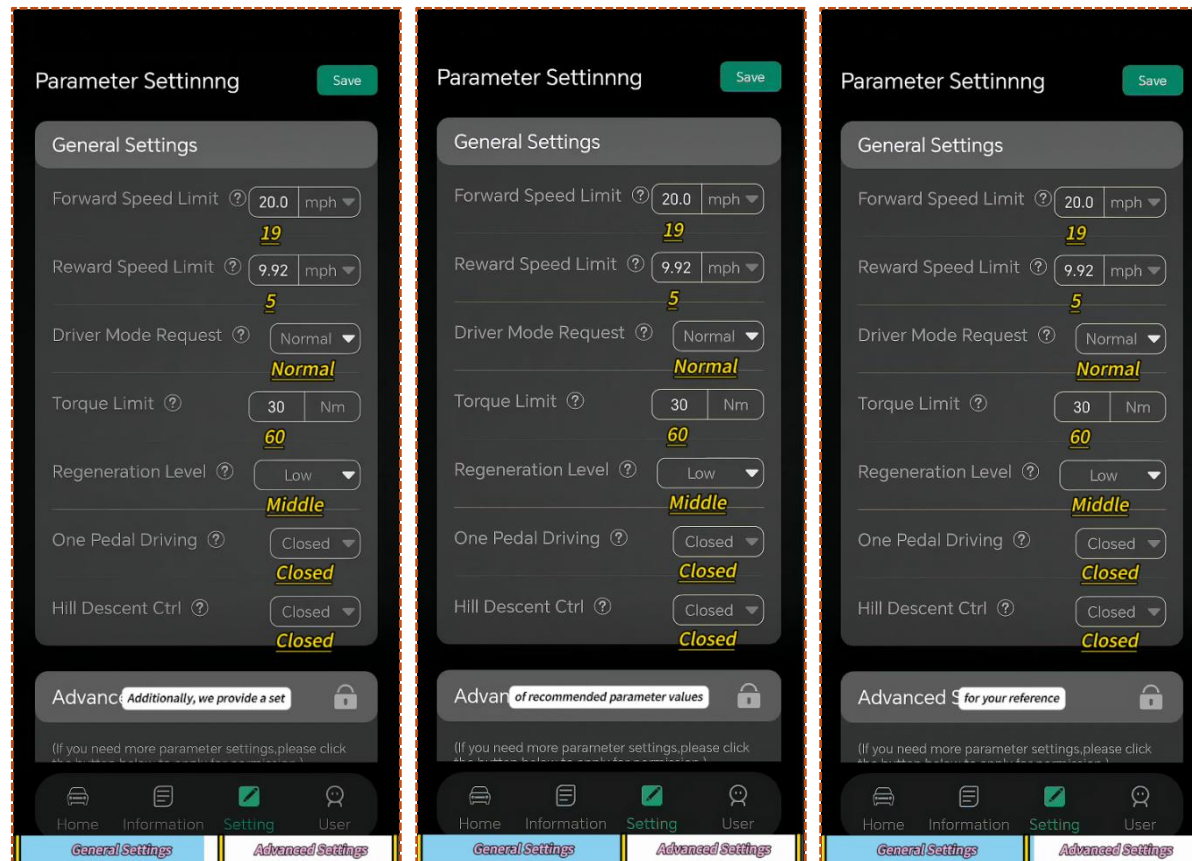


6.2 Configuring General Settings

In the general settings section, you can adjust core driving parameters. Common examples include:

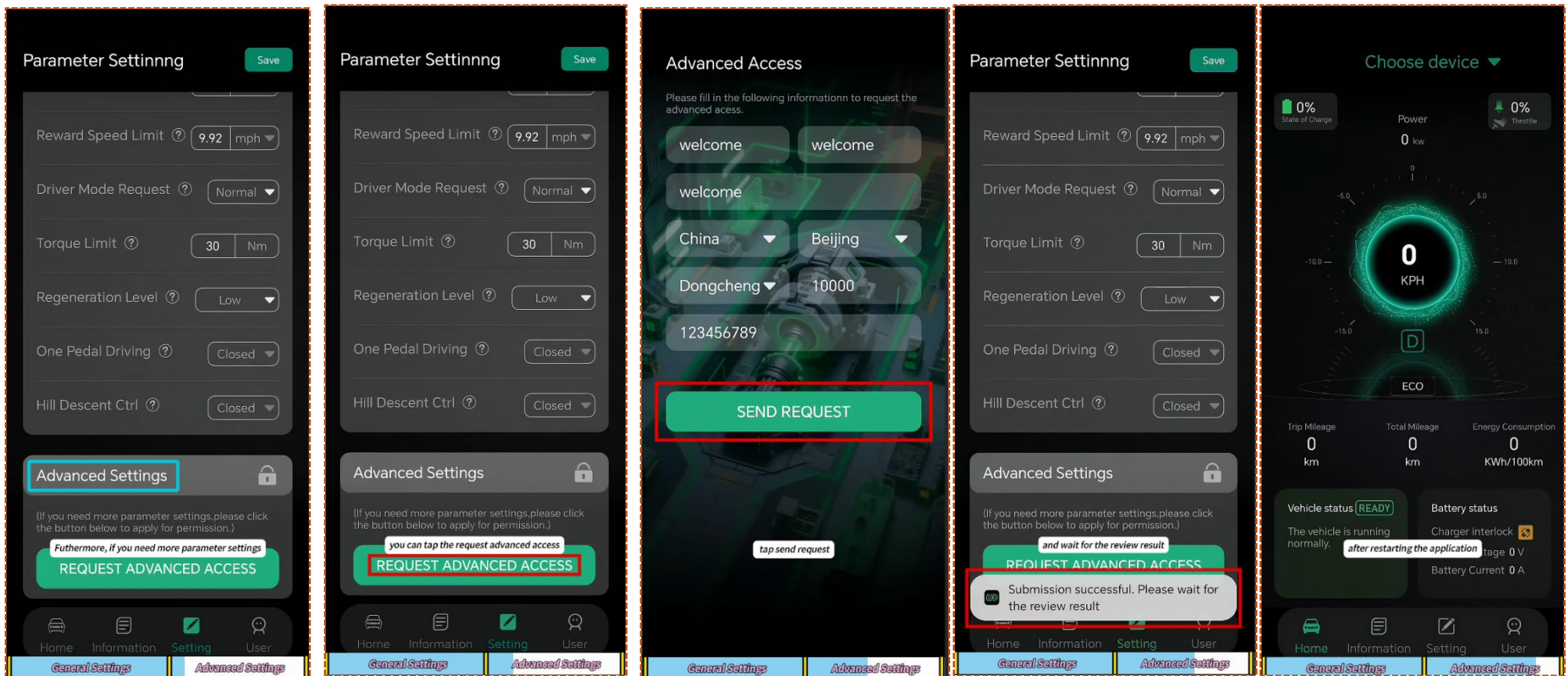
1. Forward Speed Limit
2. Drive Mode Request (e.g., Eco, Sport)
3. One Pedal Driving (regenerative braking intensity)

To understand the function and effect of any parameter, tap the question mark (information) icon next to its name to view a detailed description. When entering a value, the system validates your input. If a value is outside the permissible range, a red warning message will appear below the input field to prompt correction. After configuring your desired parameters, tap the Save button to confirm and apply your settings.



6.3 Using Recommended Parameter Values

To assist with configuration, a set of Recommended Parameter Values is provided for reference. You can apply these predefined settings as a baseline or starting point for further customization.



6.4 Applying for Advanced Access

For users requiring control over additional, specialized vehicle parameters, an advanced access mode is available.

1. Within the Settings Page, locate and tap the Request Advanced Access button.
2. You will be prompted to fill out an application form with the required information.
3. After completing the form, tap Send Request to submit it for review.
4. Please wait for the review result, which will be communicated through the application.
5. If your request is approved: Exit and fully restart the UltraDrive app. Upon restart, the Advanced Settings section and its contents will become visible and accessible within the Settings Page.