



# PowerBase Series

Rack-Mounted LiFePO<sub>4</sub> Battery **5.12 kWh**

- Up to **16** Units

Flexible Capacity Expansion
- >6,000** Times

Cycle Life
- 10** Years

Warranty
- Support

**Bluetooth** Upgrades

-  **Advanced LiFePO<sub>4</sub> Technology**

New Grade A LFP Cells from REPT
-  **Intelligent BMS**

Intelligent Monitoring & Multiple Protections
-  **High Compatibility**

Compatible with Many Brands of Inverter Protocols
-  **Easy Installation**

Stackable with Flexible Brackets
-  **APP Support**

Remote Monitoring of Battery Status
-  **Wake-up Function**

Reactivate and Recharge Asleep Batteries

## System Specification

Model	PowerBase R5
Electric Data	
Nominal Energy (kWh)	5.12
Usable Energy (kWh)	4.79
Depth Of Discharge (DoD)	95%
Cell Type	LFP (LiFePO <sub>4</sub> )
Nominal Voltage (V)	51.2
Operating Voltage Range (V)	44.8 ~ 56.8
Max. Continuous Charge Current (A)	100
Max. Continuous Discharge Current (A)	100
Scalability	16
General Data	
Weight (kg / lbs.)	45 / 99.2
Dimensions (W × D × H) (mm / inch)	442 x 560 x 173 / 17.4 x 22.05 x 6.81
Operating Temperature (°C)	0~ 55°C (Charge) -20~55°C (Discharge)
Storage Temperature (°C) Delivery SOC State (20~40%)	>1 Month: 0~35°C, ≤1 Month: -20~45°C
Relative Humidity	≤ 95%
Altitude (m / ft)	4000 / 13,123 (>2,000 / >6,561.68 derating)
Enclosure Rating	IP20
Installation Location	Indoor
Communication	CAN, RS485
Display	LCD
Certificates	UN38.3, IEC61000-6-1/3

[1] When the ambient temperature is too low or too high, the performance of battery may be limited.

[2] All pictures shown are for reference only and data are based on ROYPOW standard test procedures. Actual performance may vary according to local conditions. Only authorized personnel are allowed to operate or make adjustments to the batteries. We reserve the right to make revisions as well as product alterations and improvements at any time without prior notice.



1

Residential ESS

5.12 kWh



# PowerBase Series


Wall-Mounted LiFePO<sub>4</sub> Battery **5.12 kWh**

Support **Wi-Fi** Remote  
Monitoring and Upgrades

Up to **16** Units  
Flexible Capacity Expansion

**>6,000** Times  
Cycle Life


**10** Years  
Warranty

-  **Safe**

✓ Grade A LFP Cells from  
Global Top 10 Brands

✓ Upper Cover Protection  
for Terminals
-  **Reliable**

✓ Long Design Life

✓ Zero Maintenance and  
No Frequent Swapping
-  **Convenient**

✓ Modular Design for  
Easy Scalability

✓ Wall-Mounted Installation
-  **Intelligent**

✓ Support Automatic DIP Switch  
Address Allocation

✓ Support Real-Time Monitoring and  
OTA Upgrades via ROYPOW App

## System Specification

Model	PowerBase 5
Electric Data	
Nominal Energy (kWh)	5.12
Usable Energy (kWh)	4.79
Depth Of Discharge (DoD)	95%
Cell Type	LFP (LiFePO <sub>4</sub> )
Nominal Voltage (V)	51.2
Operating Voltage Range (V)	44.8~56.8
Max. Continuous Charge Current (A)	100
Max. Continuous Discharge Current (A)	100
Scalability	16
General Data	
Weight (kg / lbs.)	50 / 110.23
Dimensions (W × D × H) (mm / inch)	510 x 510 x 166 / 20.08 x 20.08 x 6.54
Operating Temperature (°C)	0~ 55 (Charge) -20~55 (Discharge)
Storage Temperature (°C) Delivery SOC State (20~40%)	>1 Month: 0~35, ≤1 Month: -20~45
Relative Humidity	≤ 95%
Altitude (m / ft)	4000 / 13,123 (>2,000 / >6,561.68 derating)
Enclosure Rating	IP20
Installation Location	Indoor
Communication	CAN, RS485, WiFi
Display	LCD
Certificates	UN38.3, IEC61000-6-1/3

[1] When the ambient temperature is too low or too high, the performance of battery may be limited.  
[2] All pictures shown are for reference only and data are based on ROYPOW standard test procedures. Actual performance may vary according to local conditions. Only authorized personnel are allowed to operate or make adjustments to the batteries. We reserve the right to make revisions as well as product alterations and improvements at any time without prior notice.





# PowerBase Series

Wall-Mounted LiFePO<sub>4</sub> Battery 11.7kWh

Support **Wi-Fi** Remote  
Monitoring and Upgrades

Up to **16** Units  
Flexible Capacity Expansion

**>6,000** Times  
Cycle Life

**10** Years  
Warranty

- ✓ Safe

✓ Grade A LFP Cells from  
Global Top 10 Brands

✓ Upper Cover Protection  
for Terminals
- ✓ Reliable

✓ Long Design Life

✓ Zero Maintenance and  
No Frequent Swapping
- ✓ Convenient

✓ Modular Design for  
Easy Scalability

✓ Wall-Mounted Installation
- ✓ Intelligent

✓ Support Automatic DIP Switch  
Address Allocation

✓ Support Real-Time Monitoring and  
OTA Upgrades via ROYPOW App

## System Specification

Model	PowerBase 11
Electric Data	
Nominal Energy (kWh)	11.7
Usable Energy (kWh)	11.1
Depth Of Discharge (DoD)	95%
Cell Type	LFP (LiFePO <sub>4</sub> )
Nominal Voltage (V)	51.2
Operating Voltage Range (V)	44.8~56.8
Max. Continuous Charge Current (A)	200
Max. Continuous Discharge Current (A)	200
Scalability	16
General Data	
Weight (kg / lbs)	105 / 231.49
Dimensions (W × D × H) (mm / inch)	720 x 530 x 205 / 28.35 x 20.87 x 8.07
Operating Temperature (°C)	0~ 55 (Charge) -20~55 (Discharge)
Storage Temperature (°C) Delivery SOC State (20~40%)	>1 Month: 0~35, ≤1 Month: -20~45
Relative Humidity	≤ 95%
Altitude (m / ft)	4000 / 13,123 (>2,000 / >6,561.68 derating)
Protection Degree	IP20 / IP65
Installation Location	Outdoor/indoor
Communication	CAN, RS485, WiFi
Display	LCD
Certificates	UN38.3, IEC61000-6-1/3

[1] When the ambient temperature is too low or too high, the performance of battery may be limited.

[2] All pictures shown are for reference only and data are based on ROYPOW standard test procedures. Actual performance may vary according to local conditions. Only authorized personnel are allowed to operate or make adjustments to the batteries. We reserve the right to make revisions as well as product alterations and improvements at any time without prior notice.



PowerBase Series

Floor-Mounted LiFePO<sub>4</sub> Battery

16kWh

Support **Wi-Fi** Remote  
Monitoring and Upgrades

Up to **16** Units  
Flexible Capacity Expansion

**>6,000** Times  
Cycle Life

**10** Years  
Warranty

- Safe**

✓ Grade A LFP Cells from  
Global Top 10 Brands

✓ Upper Cover Protection  
for Terminals
- Reliable**

✓ Long Design Life

✓ Zero Maintenance and  
No Frequent Swapping
- Convenient**

✓ Modular Design for  
Easy Scalability

✓ Floor-mounted Installation
- Intelligent**

✓ Support Automatic DIP Switch  
Address Allocation

✓ Support Real-Time Monitoring and  
OTA Upgrades via ROYPOW App

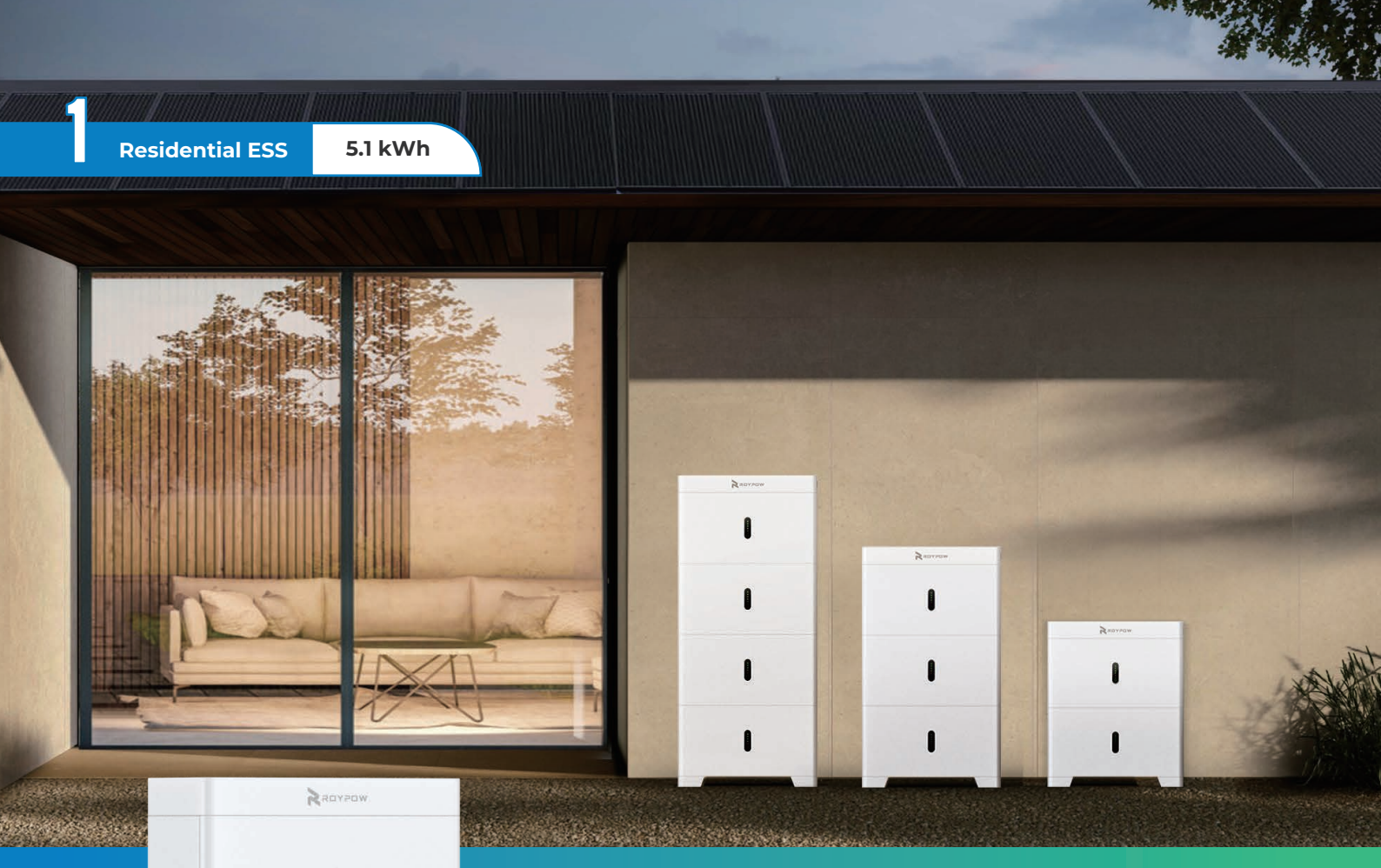
System Specification

Model	PowerBase 16
Electric Data	
Nominal Energy (kWh)	16.07
Usable Energy (kWh)	15.27
Depth Of Discharge (DoD)	95%
Cell Type	LFP (LiFePO <sub>4</sub> )
Nominal Voltage (V)	51.2
Operating Voltage Range (V)	44.8~56.8
Max. Continuous Charge Current (A)	150
Max. Continuous Discharge Current (A)	150
Scalability	16
General Data	
Weight (kg / lbs)	125 / 275.58
Dimensions (W × D × H) (mm / inch)	890 x 530 x 240 / 35.04 x 20.87 x 9.45
Operating Temperature (°C)	0~ 55 (Charge) -20~55 (Discharge)
Storage Temperature (°C) Delivery SOC State (20~40%)	>1 Month: 0~35, ≤1 Month: -20~45
Relative Humidity	≤ 95%
Altitude (m / ft)	4000 / 13,123 (>2,000 / >6,561.68 derating)
Protection Degree	IP20 / iP65
Installation Location	Outdoor / indoor
Communication	CAN, RS485, WiFi
Display	LCD
Certificates	UN38.3, IEC61000-6-1/3

[1] When the ambient temperature is too low or too high, the performance of battery may be limited.

[2] All pictures shown are for reference only and data are based on ROYPOW standard test procedures. Actual performance may vary according to local conditions. Only authorized personnel are allowed to operate or make adjustments to the batteries. We reserve the right to make revisions as well as product alterations and improvements at any time without prior notice.





# PowerHome

LiFePO<sub>4</sub> Battery **5.1 kWh**

Empowering Sustainable Energy Storage for Homes



- Up to **16** Batteries  
Flexible Capacity Expansion
- >6,000** Times  
Cycle Life
- IP65**  
Ingress Rating
- 10** Years  
Warranty

- Advanced LiFePO<sub>4</sub> Technology**  
Safe, Cobalt-free Battery Chemistry
- Modular and Stacked Design**  
Easier Installation
- Safe Protection**  
Intelligent BMS & Built-in Fire Extinguishing System
- High Compatibility**  
Compatible with Inverters of Leading Brands

## Technical Specifications

Model	1*RBmax5.1L	2*RBmax5.1L2	3*RBmax5.1L2	4*RBmax5.1L2	5*RBmax5.1L2	6*RBmax5.1L2	7*RBmax5.1L2	8*RBmax5.1L2
Nominal Energy (kWh)	5.12	10.24	15.36	20.48	25.6	30.72	35.84	40.96
Usable Energy (kWh)	4.79	9.58	14.37	19.16	23.95	28.74	33.53	38.32
Scalability (kWh)	Max. 16 in parallel, Max. 81kWh							
Nominal Charge/Discharge Current (A)	50 / 50	100 / 100	150 / 150	200 / 200	250 / 250	300 / 300	350 / 350	400 / 400
Max. Charge/Discharge Current(A)	100 / 100	100 / 200	150 / 300	200 / 400	250 / 400	300 / 400	350 / 400	400 / 400
Cell type	Lithium iron phosphate (LFP)							
Nominal voltage (V)	51.2							
Operating voltage range (V)	44.8 ~ 56.8							
General Data								
Weight (Kg / lbs.)	48.5 Kg 106.9 lbs.	94.3 Kg 207.89 lbs.	140 Kg 308.64 lbs.	185.7 Kg 409.39 lbs.	234.3 Kg 516.54 lbs.	280 Kg 617.29 lbs.	325.7 Kg 718.04 lbs.	371.4 Kg 818.79 lbs.
Dimensions (W × D × H mm / inch)	650x240x460 mm 25.6 x 9.5 x 18.1 inch	650x240x790 mm 25.6x9.4x31.1 inch	650x240x1120 mm 25.6x9.4x44.1 inch	650x240x1450 mm 25.6x9.4x57.1 inch	650x240x790 + 650x240x1120 mm 25.6x9.4x31.1 inch+ 25.6x9.4x44.1 inch	650x240x1120 + 650x240x1120 mm 25.6x9.4x44.1 inch+ 25.6x9.4x44.1 inch	650x240x1120 + 650x240x1450 mm 25.6x9.4x44.1 inch+ 25.6x9.4x57.1 inch	650x240x1450 + 650x240x1450 mm 25.6x9.4x57.1 inch+ 25.6x9.4x57.1 inch
Operating temperature (°F/°C) <sup>[1]</sup>	Charge: 32 ~ 131°F (0 ~ 55°C), Discharge: 4 ~ 131°F (-20 ~ 55°C)							
Storage temperature (°F/°C)	≤1 month: -4 ~ 113°F (-20 ~ 45°C), >1 month: 32 ~ 95°F (0 ~ 35°C)							
Installation location	Indoor/Outdoor, Floor standing or Wall mounted							
Communication	CAN, RS485							
Relative humidity	0 ~ 95%							
Max. altitude (m / ft.)	4000 m / 13,123 ft (>2,000 m / >6,561.68 ft derating)							
Ingress rating	IP 65							
Certification	IEC 62619, UL 1973, EN 61000-6-1, EN 61000-6-3, FCC Part 15, UN38.3							

[1] When the ambient temperature is too low or too high, the performance of battery may be limited.

[2] All pictures shown are for reference only and data are based on ROYPOW standard test procedures. Actual performance may vary according to local conditions. Only authorized personnel are allowed to operate or make adjustments to the batteries. We reserve the right to make revisions as well as product alterations and improvements at any time without prior notice.